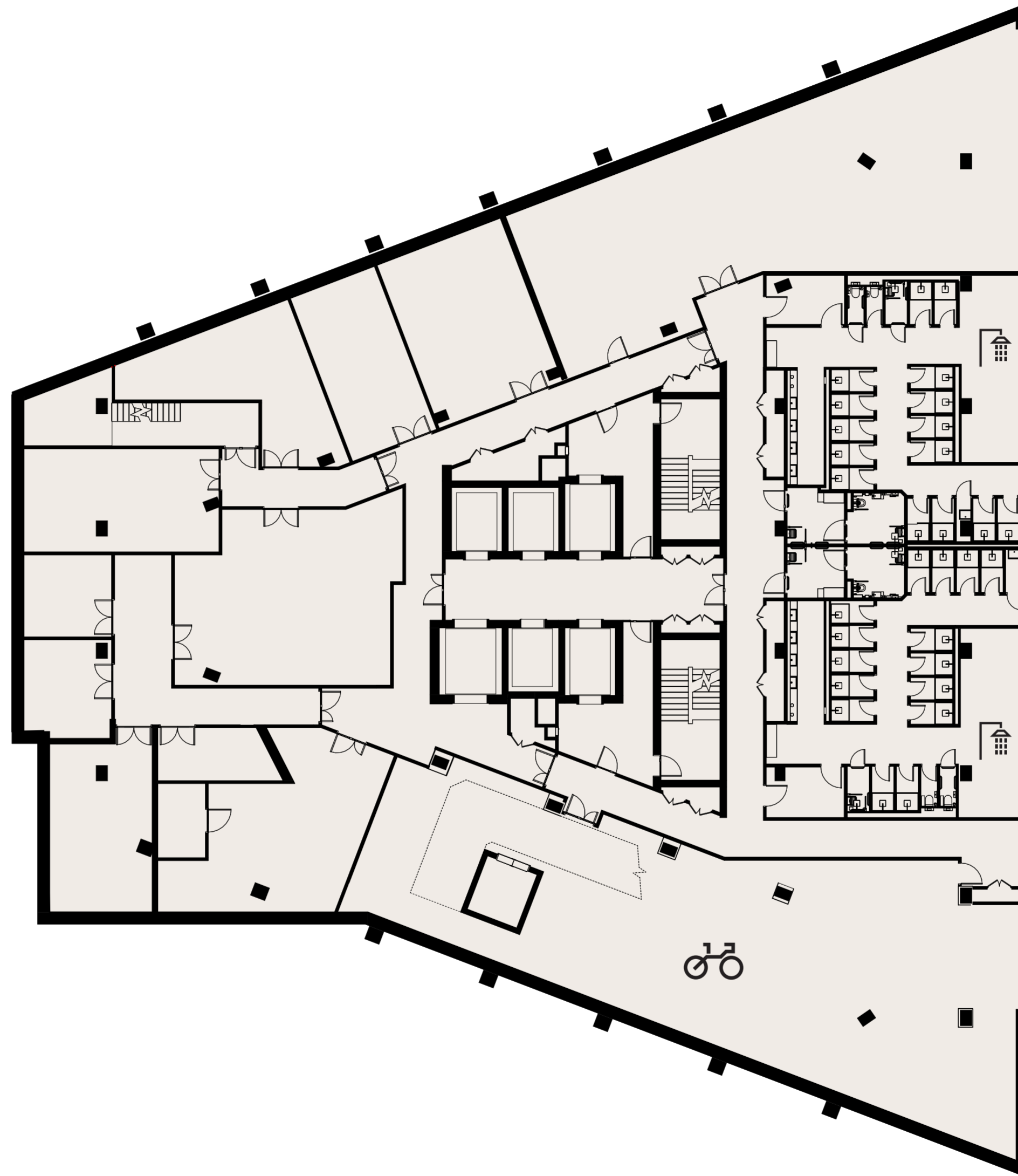


# TRIBECA—LONDON

# Reflector

## Basement Floor Layout

-1



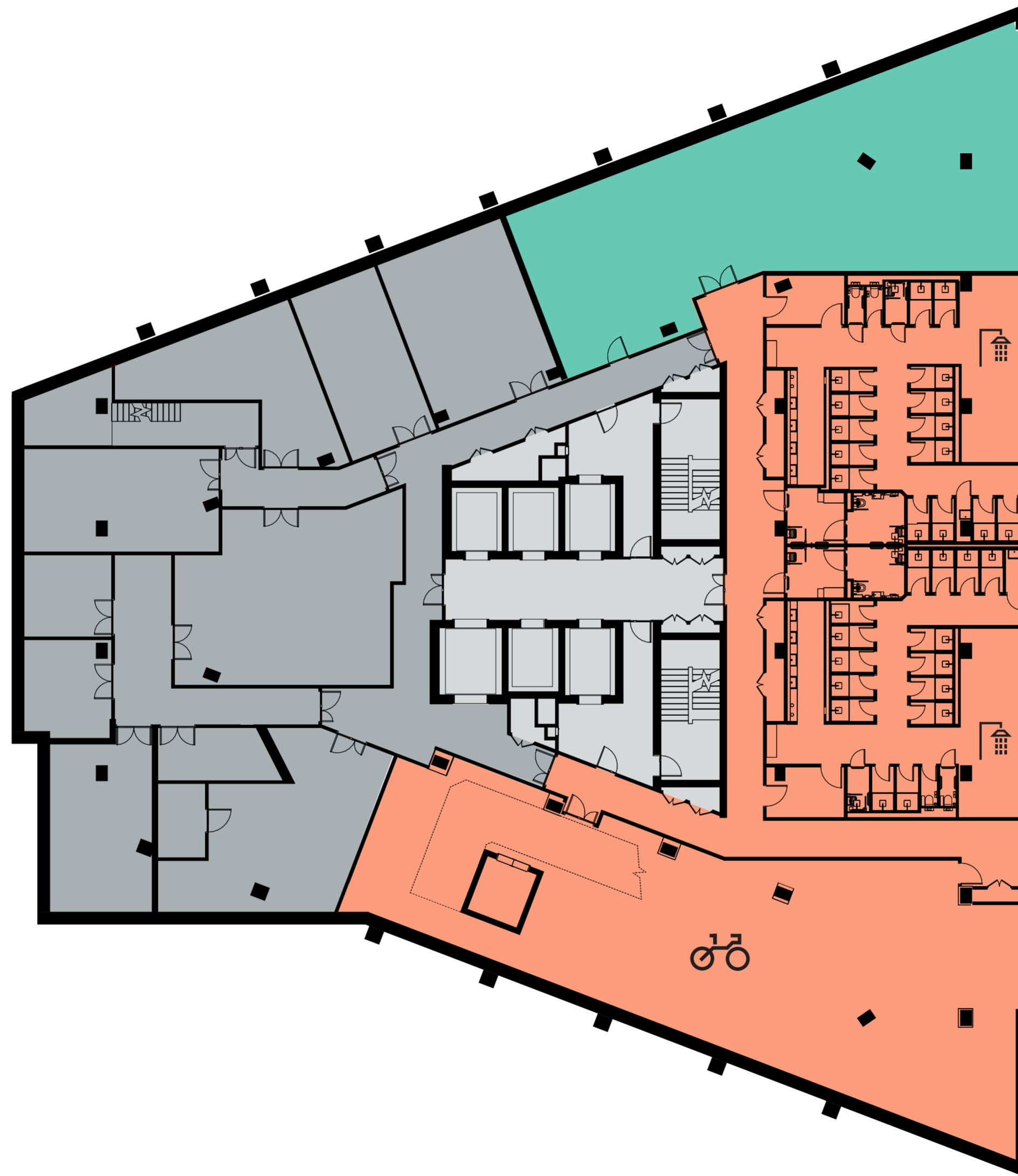
### Area (GIA)

Level 8	20,462
Level 7	20,462
Level 6	18,693
Level 5	18,693
Level 4	18,937
Level 3	18,937
Level 2	18,067
Level 1	15,511
Ground Floor	17,836
<b>Basement</b>	<b>26,236</b>
<b>Total</b>	<b>195,834</b>

# Reflector

## Basement Floor Layout

-1



### Area (GIA)

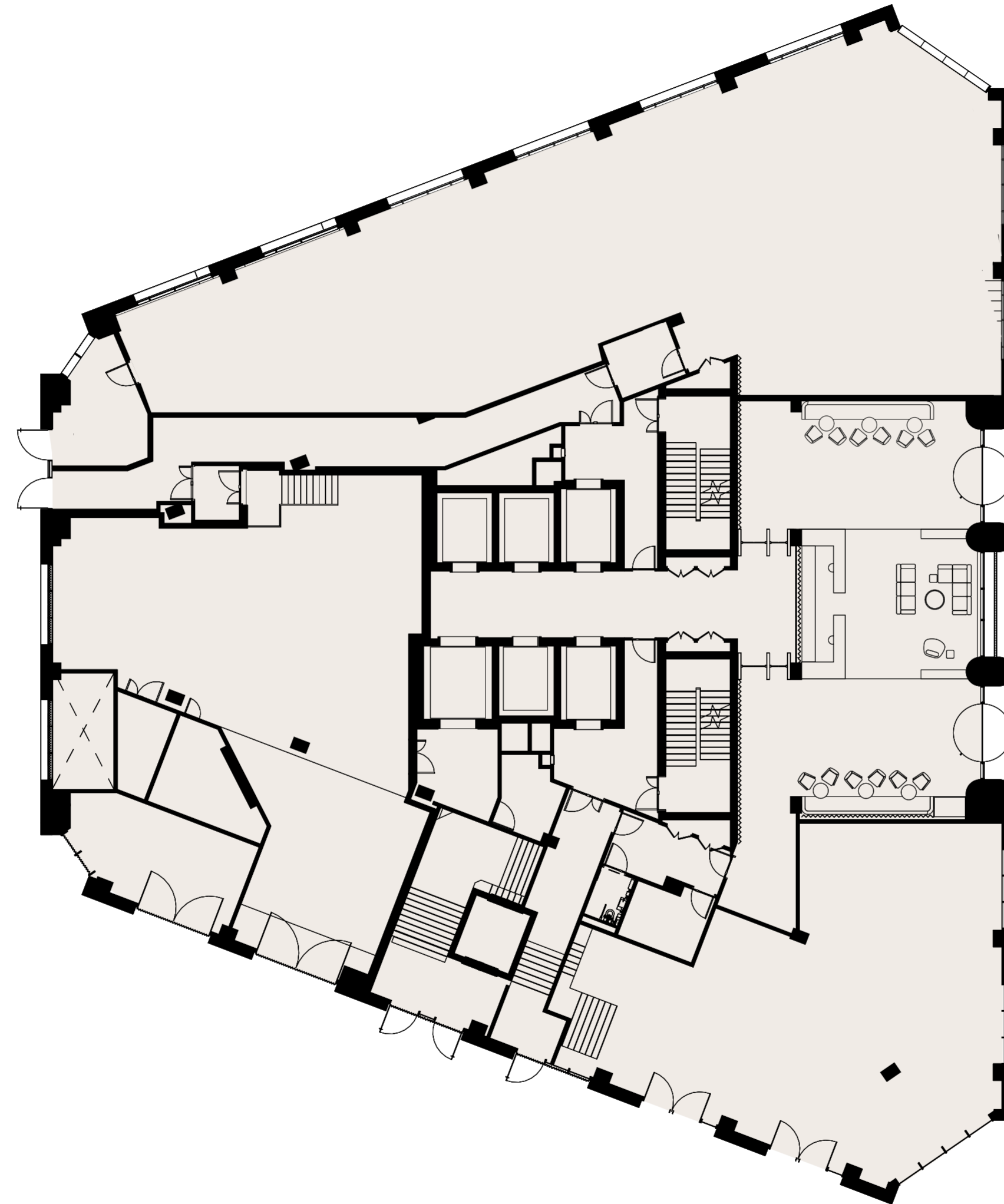
Level 8	20,462
Level 7	20,462
Level 6	18,693
Level 5	18,693
Level 4	18,937
Level 3	18,937
Level 2	18,067
Level 1	15,511
Ground Floor	17,836
<b>Basement</b>	<b>26,236</b>
<b>Total</b>	<b>195,834</b>

- Flexible Lab / Retail
- Cycle & Change Amenities
- BOH
- Core

# Reflector

## Ground Floor Layout

+0



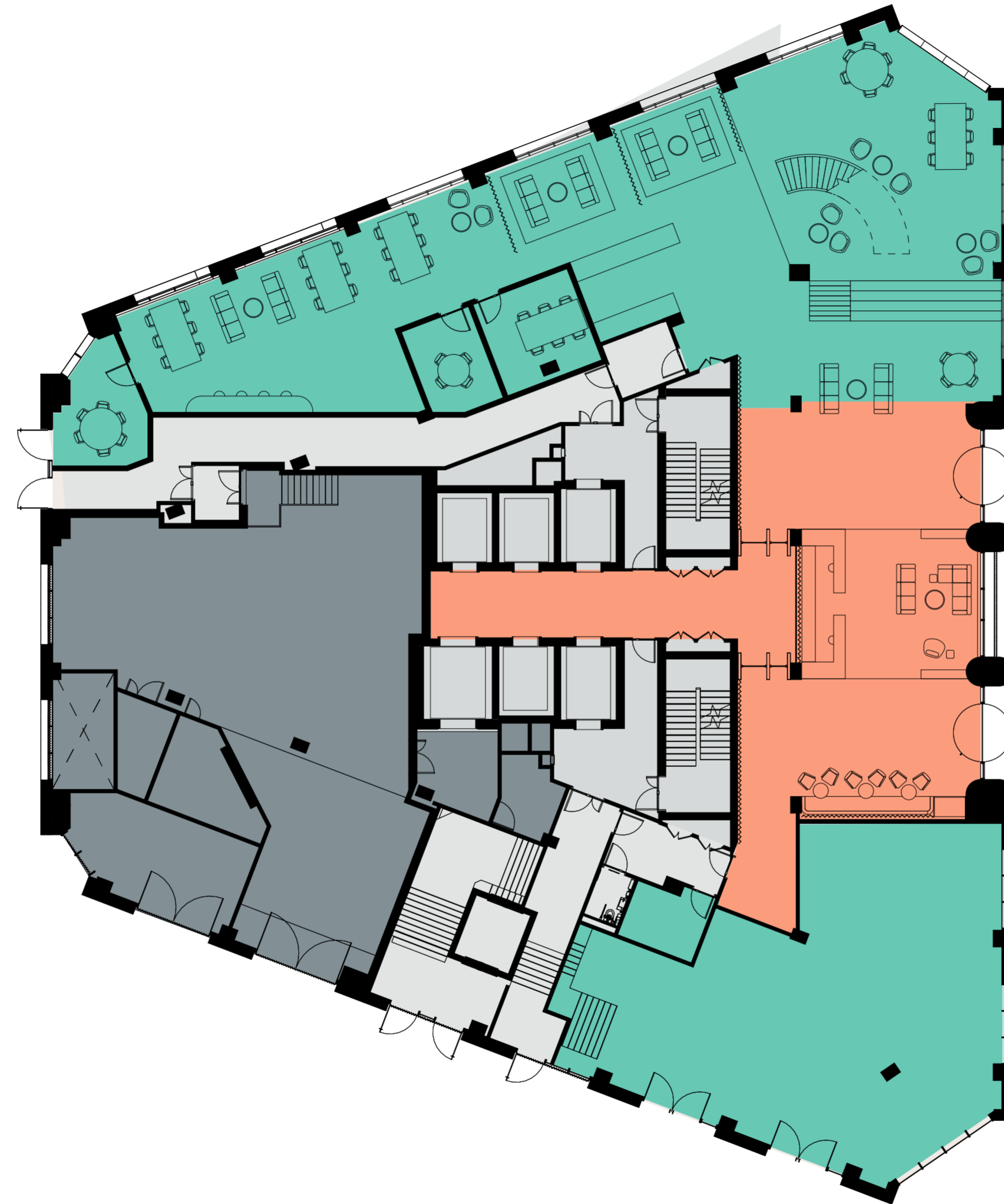
### Area (GIA)

Level 8	20,462
Level 7	20,462
Level 6	18,693
Level 5	18,693
Level 4	18,937
Level 3	18,937
Level 2	18,067
Level 1	15,511
<b>Ground Floor</b>	<b>17,836</b>
Basement	26,236
<hr/>	
<b>Total</b>	<b>195,834</b>

# Reflector





## Ground Floor Layout

+0



### Area (GIA)

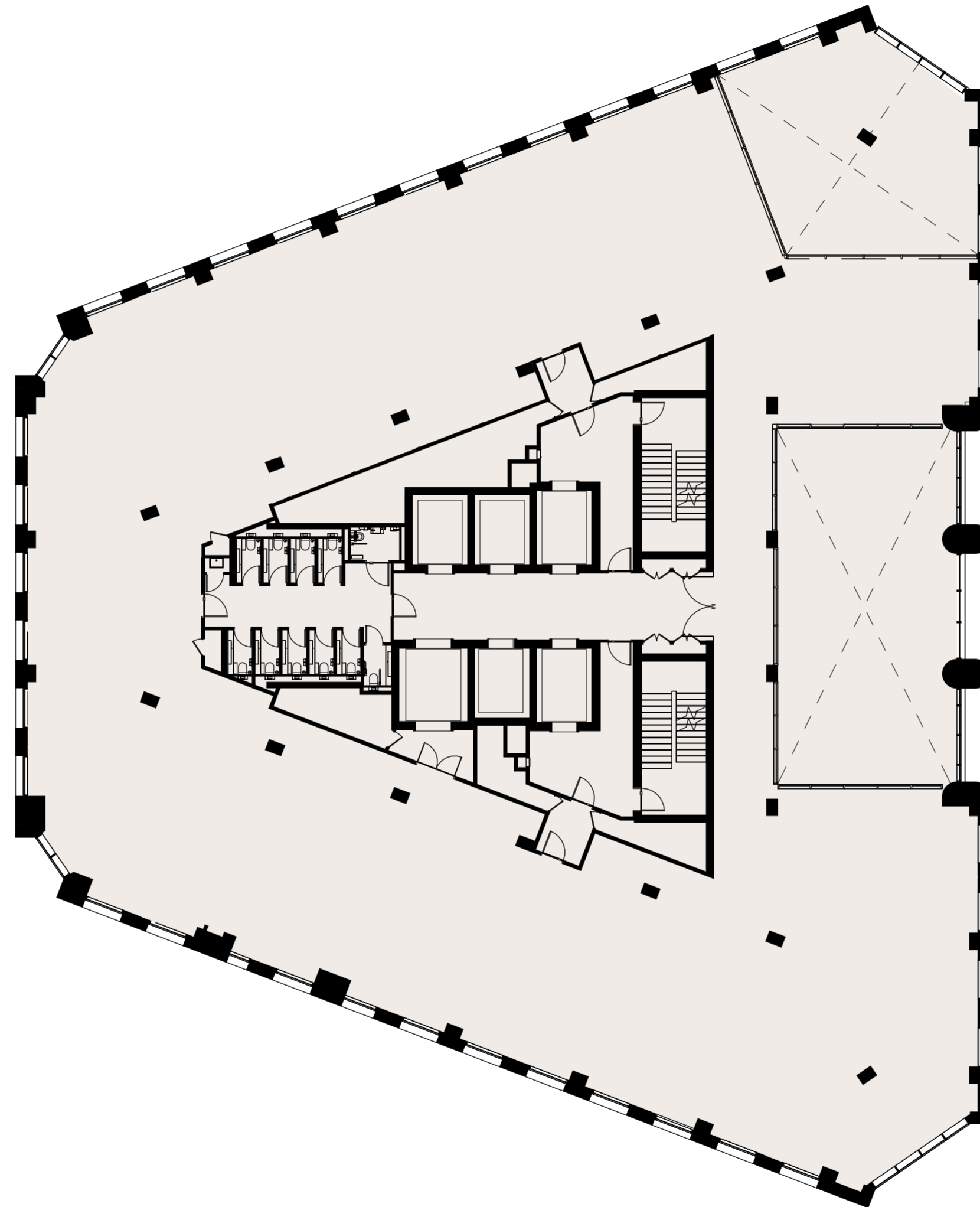
Level 8	20,462
Level 7	20,462
Level 6	18,693
Level 5	18,693
Level 4	18,937
Level 3	18,937
Level 2	18,067
Level 1	15,511
<b>Ground Floor</b>	<b>17,836</b>
Basement	26,236
<hr/>	
<b>Total</b>	<b>195,834</b>

-  Flexible Lab / Retail
-  Reception
-  Secure Service Bay
-  Core

# Reflector

## First Floor Layout

+1



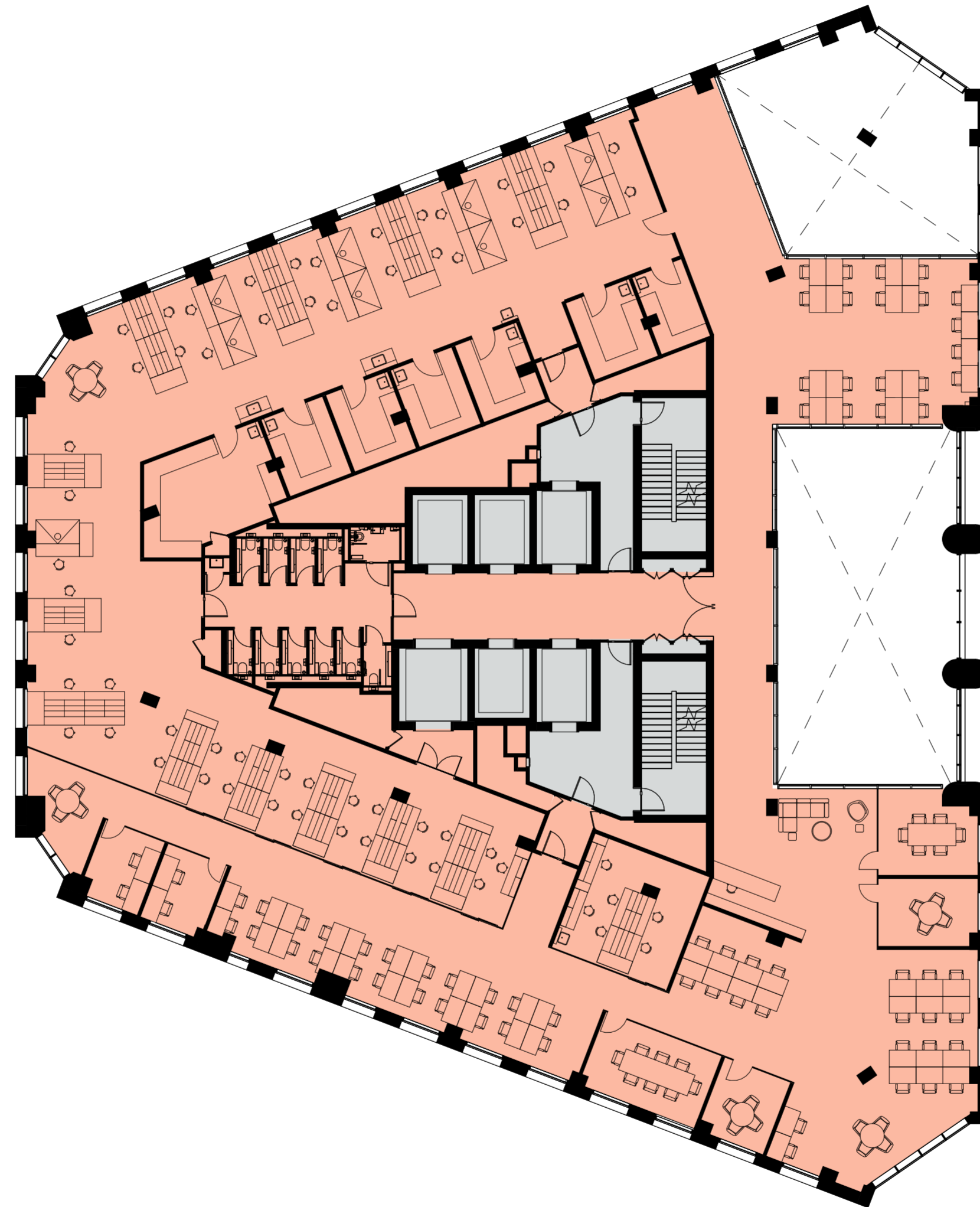
### Area (GIA)

Level 8	20,462
Level 7	20,462
Level 6	18,693
Level 5	18,693
Level 4	18,937
Level 3	18,937
Level 2	18,067
<b>Level 1</b>	<b>15,511</b>
Ground Floor	17,836
Basement	26,236
<b>Total</b>	<b>195,834</b>

# Reflector

## First Floor Layout

+1



### Area (GIA)

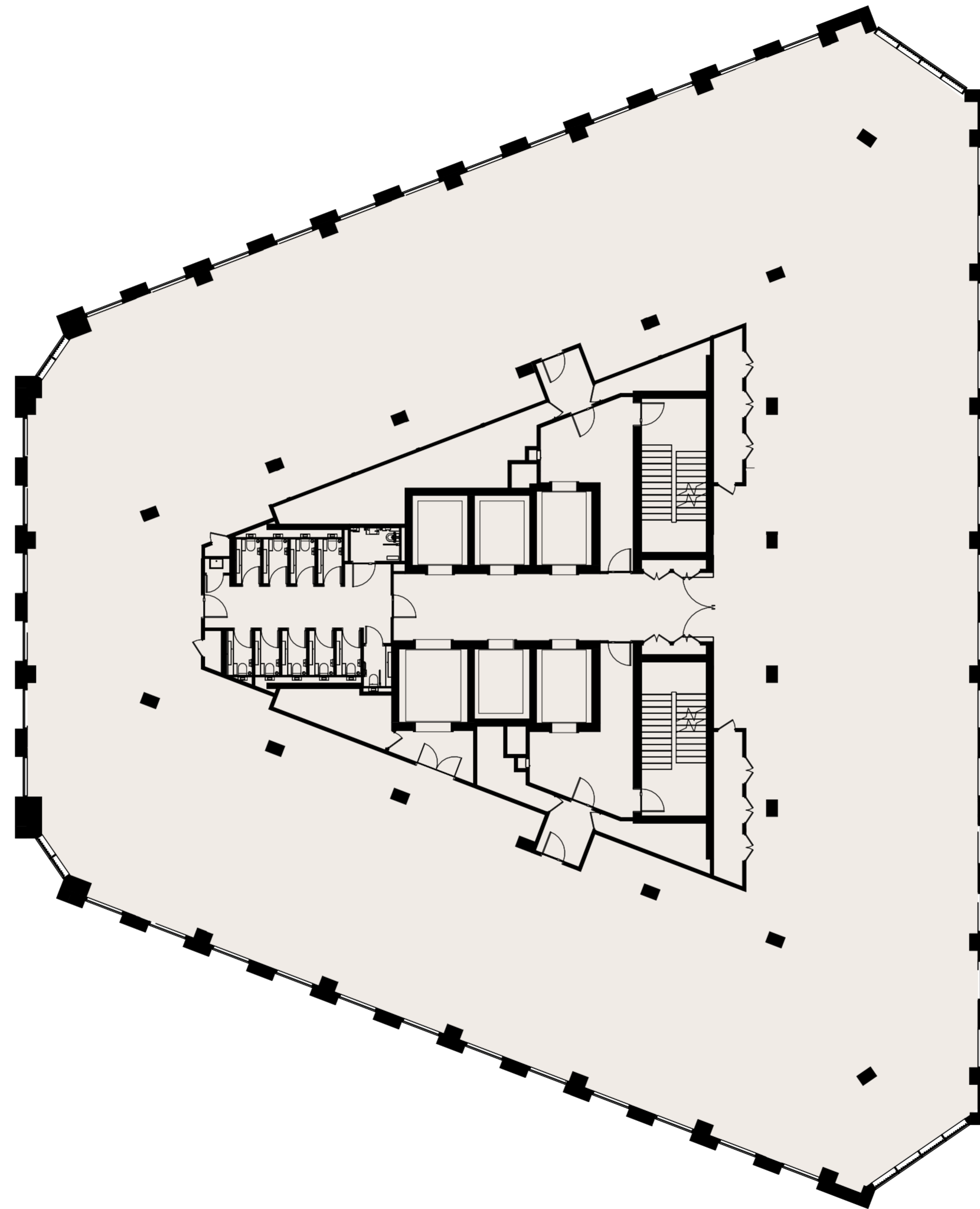
Level 8	20,462
Level 7	20,462
Level 6	18,693
Level 5	18,693
Level 4	18,937
Level 3	18,937
Level 2	18,067
<b>Level 1</b>	<b>15,511</b>
Ground Floor	17,836
Basement	26,236
<b>Total</b>	<b>195,834</b>

— Tenant Space  
— Core

# Reflector

## Second Floor Layout

+2



### Area (GIA)

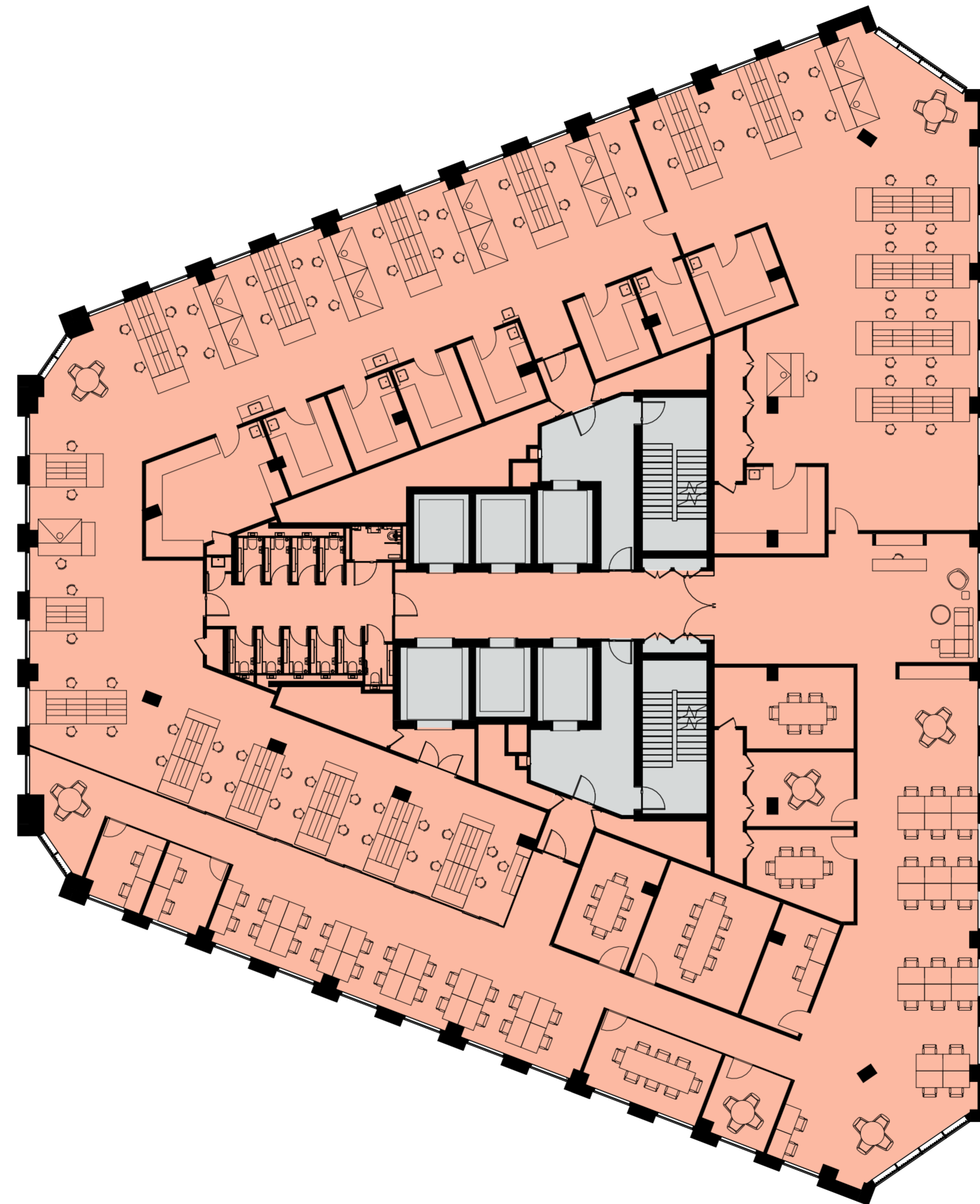
Level 8	20,462
Level 7	20,462
Level 6	18,693
Level 5	18,693
Level 4	18,937
Level 3	18,937
<b>Level 2</b>	<b>18,067</b>
Level 1	15,511
Ground Floor	17,836
Basement	26,236
<b>Total</b>	<b>195,834</b>



# Reflector

## Second Floor Layout

+2



### Area (GIA)

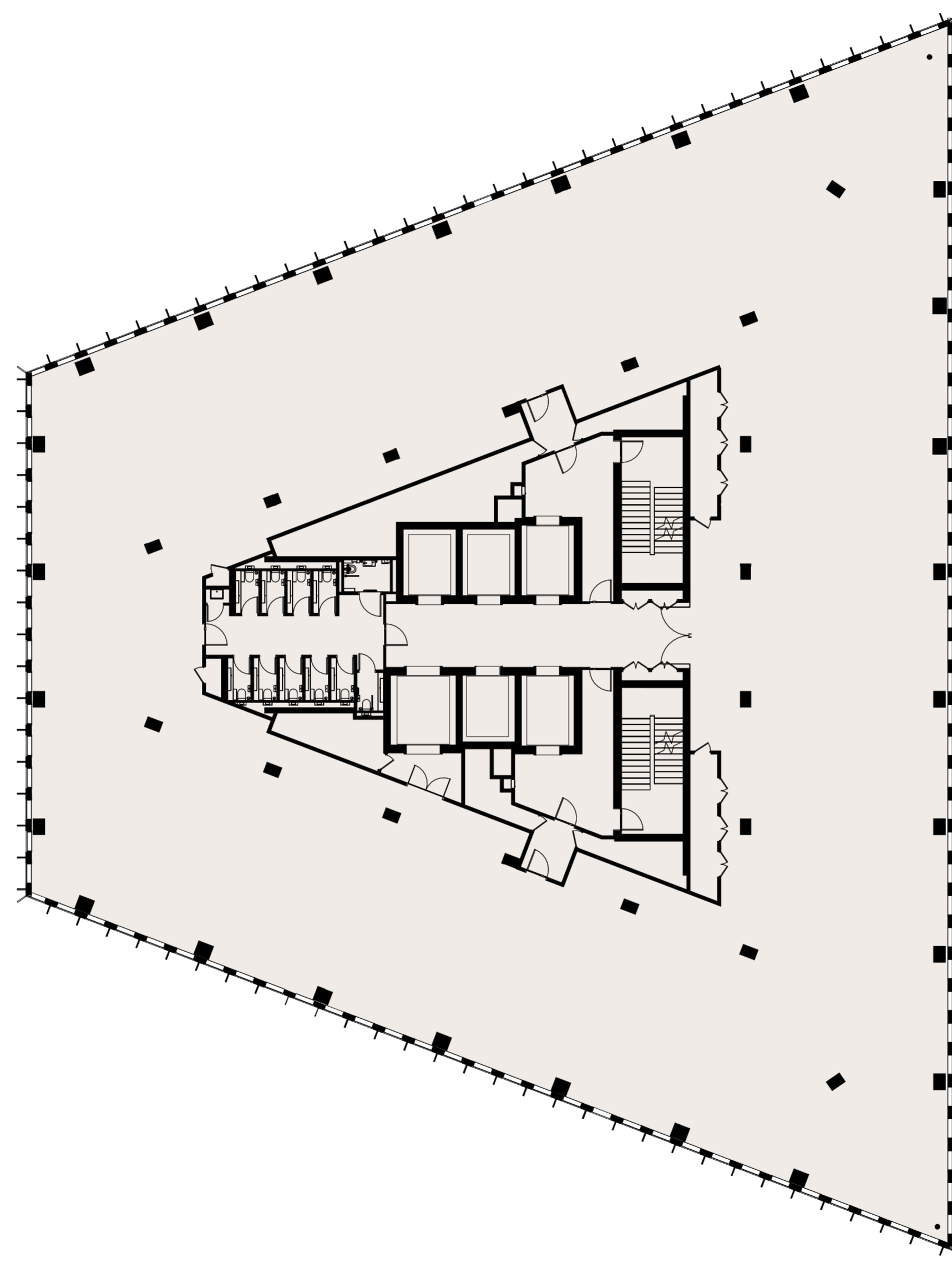
Level 8	20,462
Level 7	20,462
Level 6	18,693
Level 5	18,693
Level 4	18,937
Level 3	18,937
<b>Level 2</b>	<b>18,067</b>
Level 1	15,511
Ground Floor	17,836
Basement	26,236
<b>Total</b>	<b>195,834</b>

Tenant Space  
Core

# Reflector

Third & Fourth Floor Layout

+3 & +4



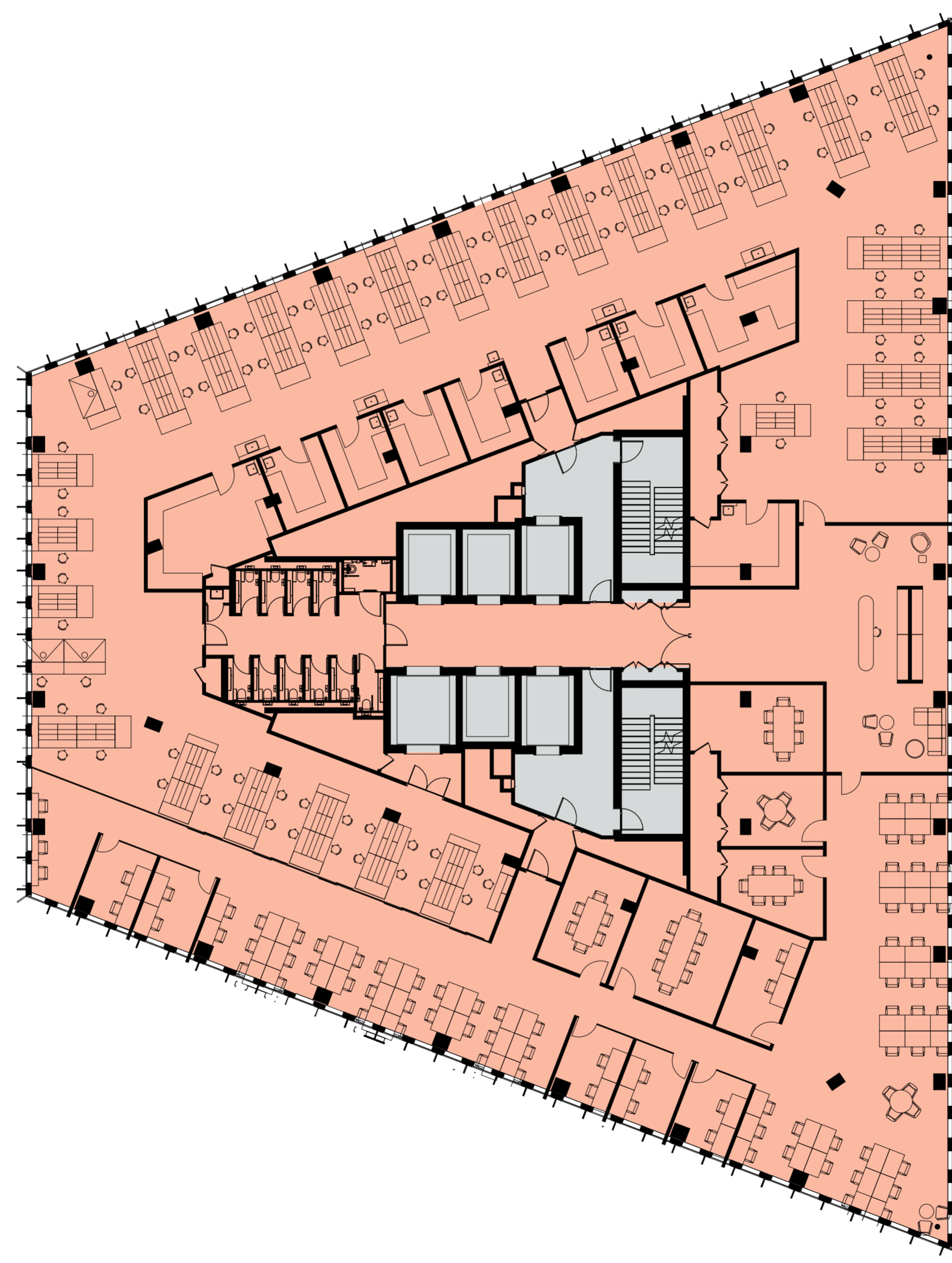
## Area (GIA)

Level 8	20,462
Level 7	20,462
Level 6	18,693
Level 5	18,693
<b>Level 4</b>	<b>18,937</b>
<b>Level 3</b>	<b>18,937</b>
Level 2	18,067
Level 1	15,511
Ground Floor	17,836
Basement	26,236
<hr/>	
<b>Total</b>	<b>195,834</b>

# Reflector

Third & Fourth Floor Layout

+3 & +4



## Area (GIA)

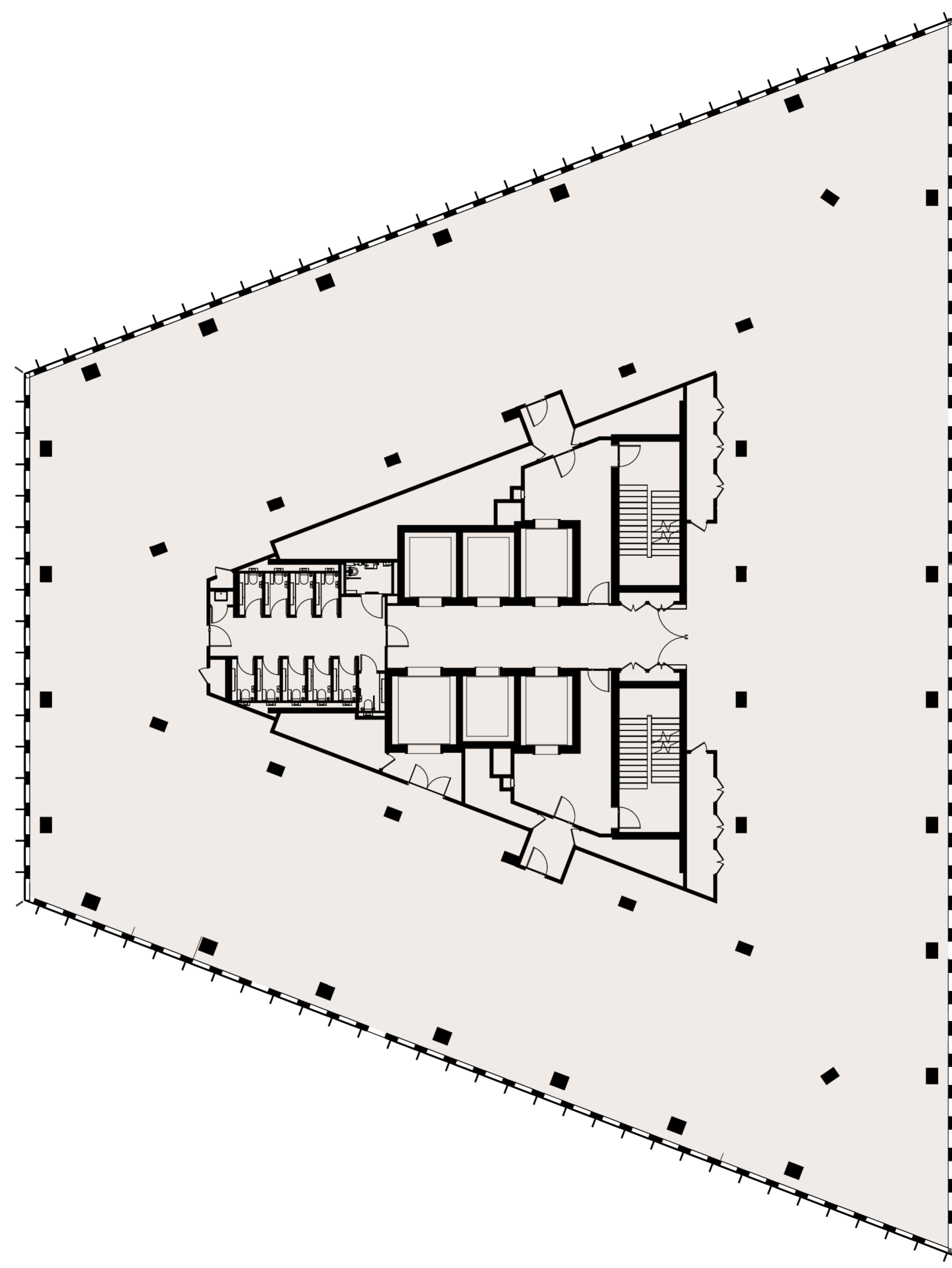
Level 8	20,462
Level 7	20,462
Level 6	18,693
Level 5	18,693
<b>Level 4</b>	<b>18,937</b>
<b>Level 3</b>	<b>18,937</b>
Level 2	18,067
Level 1	15,511
Ground Floor	17,836
Basement	26,236
<b>Total</b>	<b>195,834</b>

— Tenant Space  
— Core

# Reflector

Fifth & Sixth Floor Layout

+5 & +6



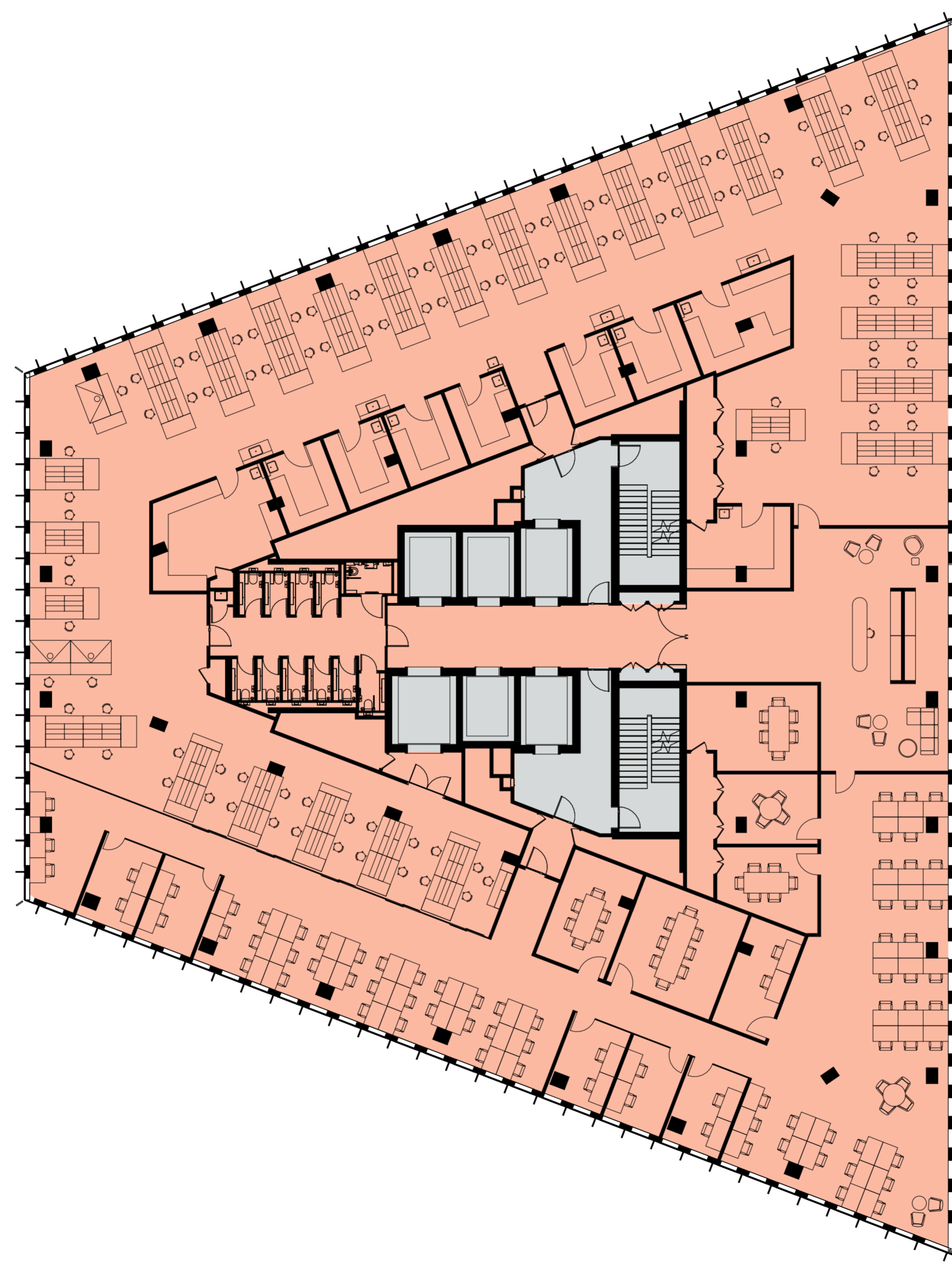
## Area (GIA)

Level 8	20,462
Level 7	20,462
<b>Level 6</b>	<b>18,693</b>
<b>Level 5</b>	<b>18,693</b>
Level 4	18,937
Level 3	18,937
Level 2	18,067
Level 1	15,511
Ground Floor	17,836
Basement	26,236
<b>Total</b>	<b>195,834</b>

# Reflector

## Fifth & Sixth Floor Layout

### +5 & +6



### Area (GIA)

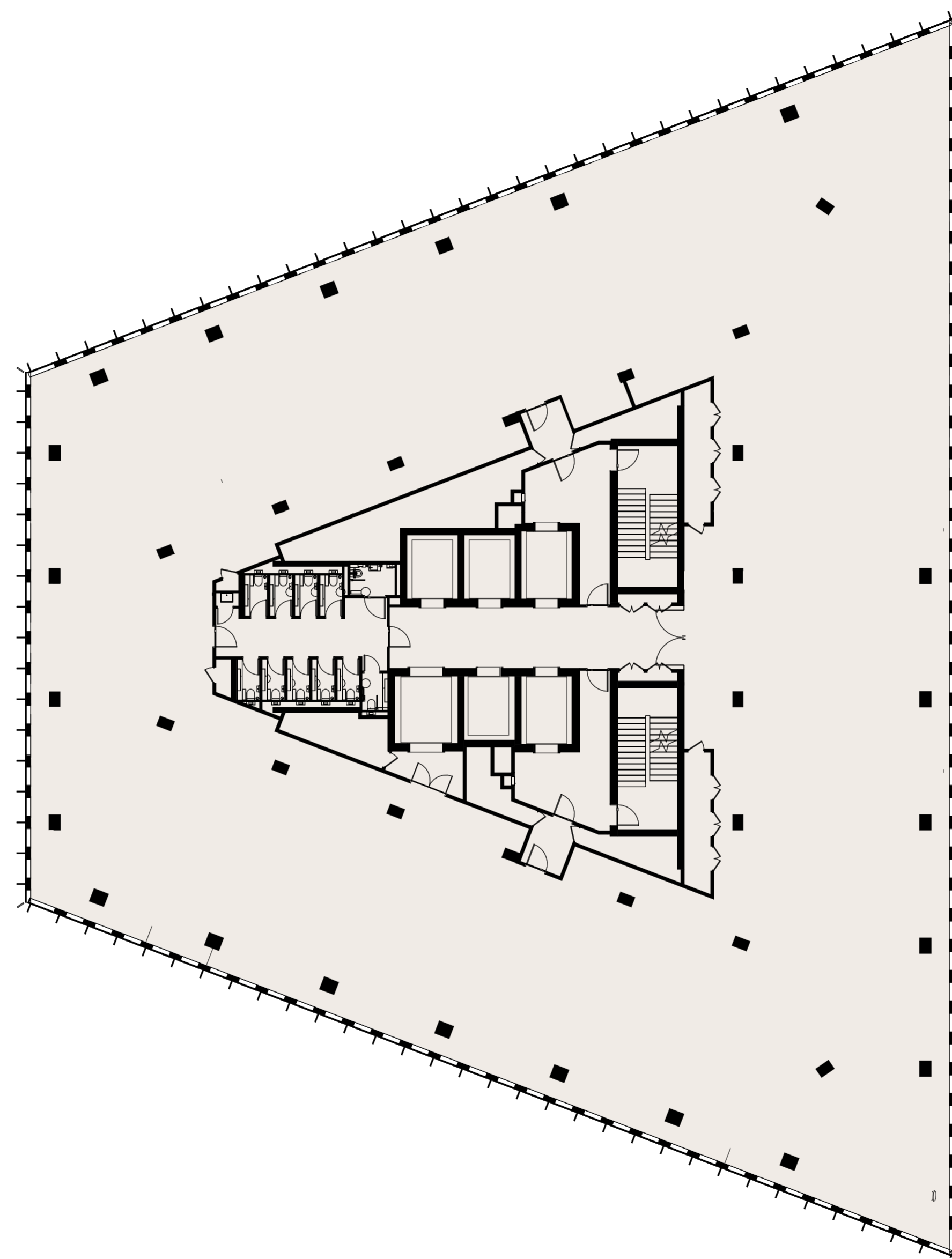
Level 8	20,462
Level 7	20,462
<b>Level 6</b>	<b>18,693</b>
<b>Level 5</b>	<b>18,693</b>
Level 4	18,937
Level 3	18,937
Level 2	18,067
Level 1	15,511
Ground Floor	17,836
Basement	26,236
<b>Total</b>	<b>195,834</b>

Tenant Space  
Core

# Reflector

Seventh & Eighth Floor Layout

+7 & +8



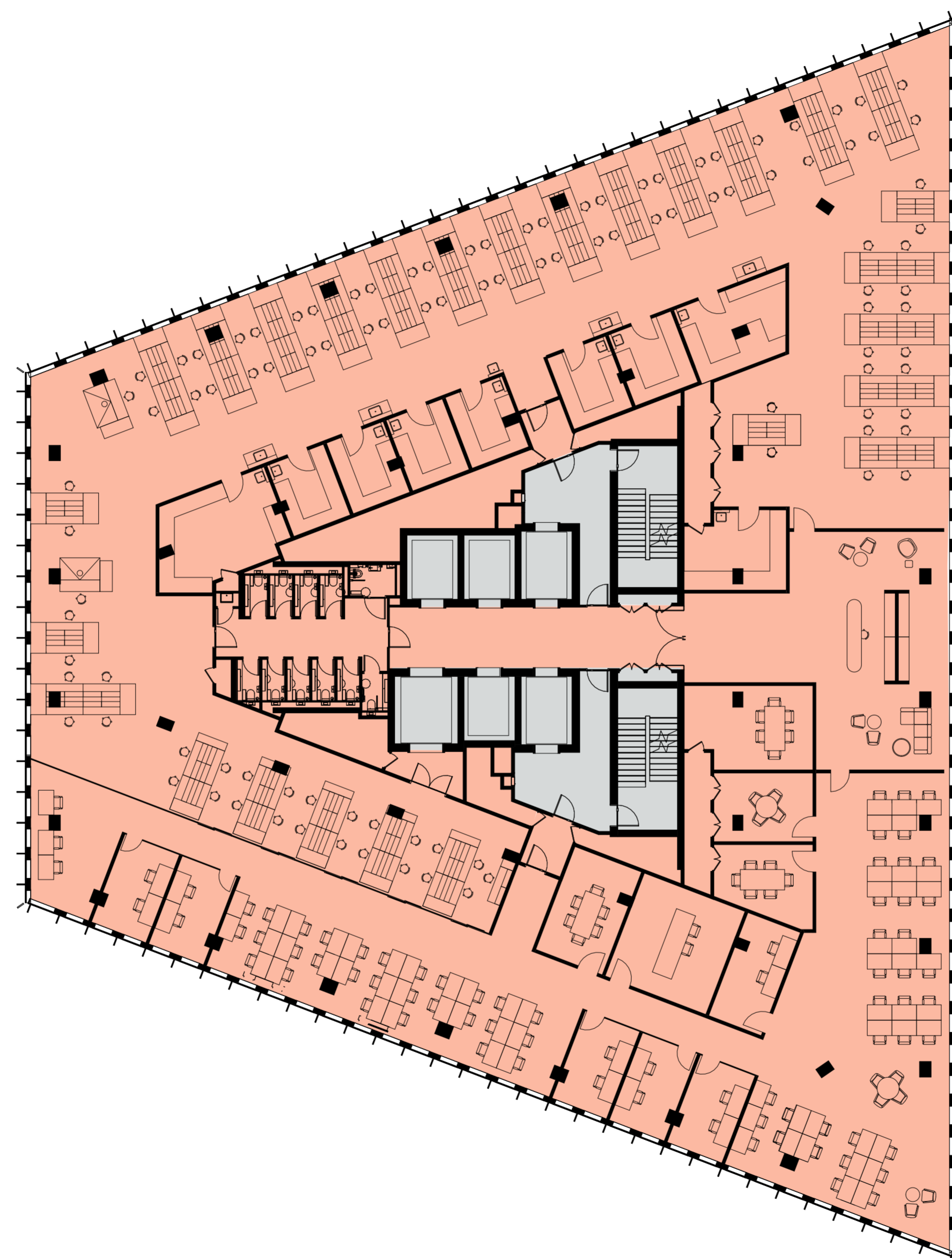
## Area (GIA)

Level 8	20,462
Level 7	20,462
Level 6	18,693
Level 5	18,693
Level 4	18,937
Level 3	18,937
Level 2	18,067
Level 1	15,511
Ground Floor	17,836
Basement	26,236
<b>Total</b>	<b>195,834</b>

# Reflector

## Seventh & Eighth Floor Layout

### +7 & +8



### Area (GIA)

Level 8	20,462
Level 7	20,462
Level 6	18,693
Level 5	18,693
Level 4	18,937
Level 3	18,937
Level 2	18,067
Level 1	15,511
Ground Floor	17,836
Basement	26,236
<b>Total</b>	<b>195,834</b>

Tenant Space  
Core