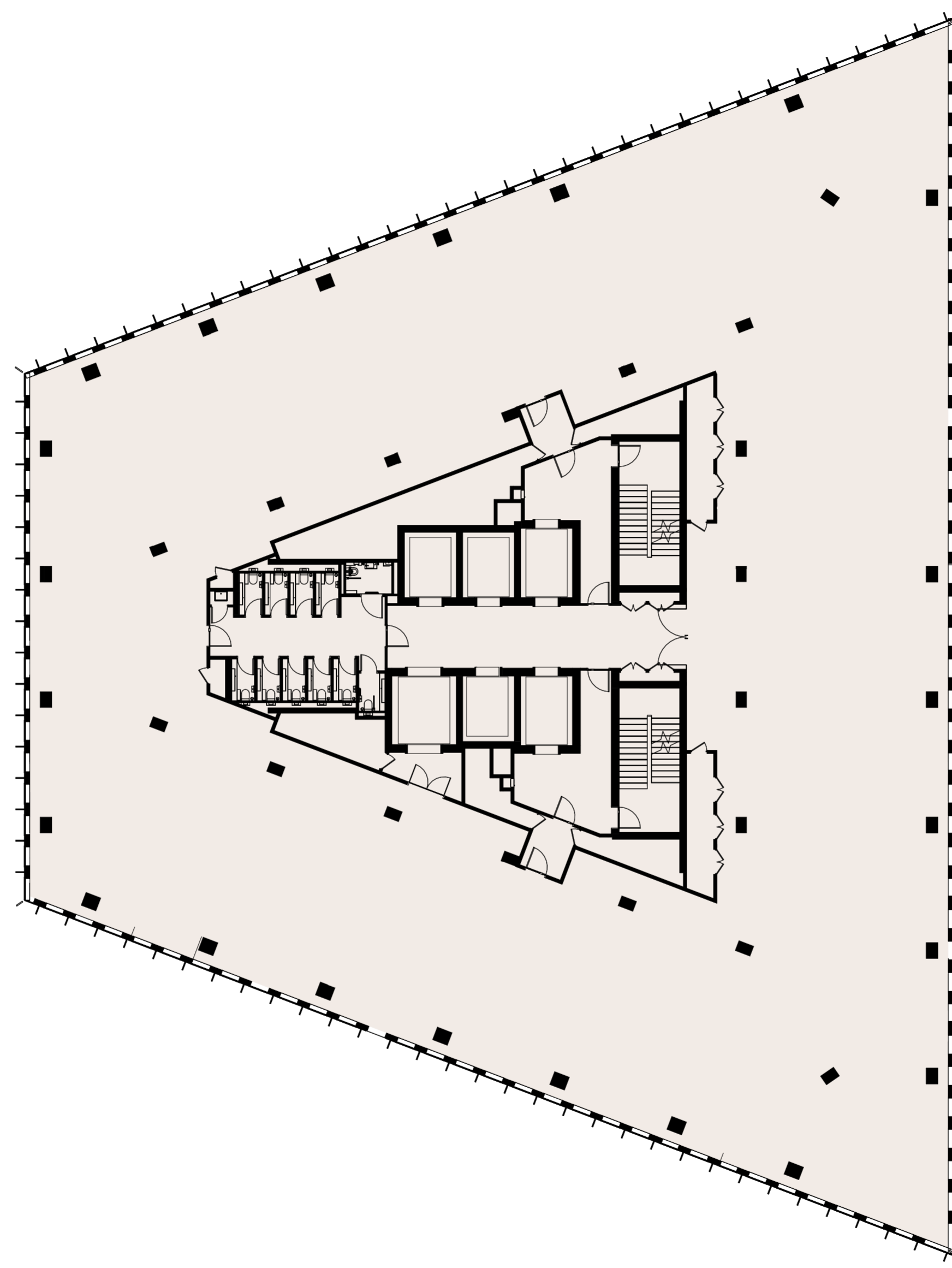


Reflector

Fifth & Sixth Floor Layout

+5 & +6



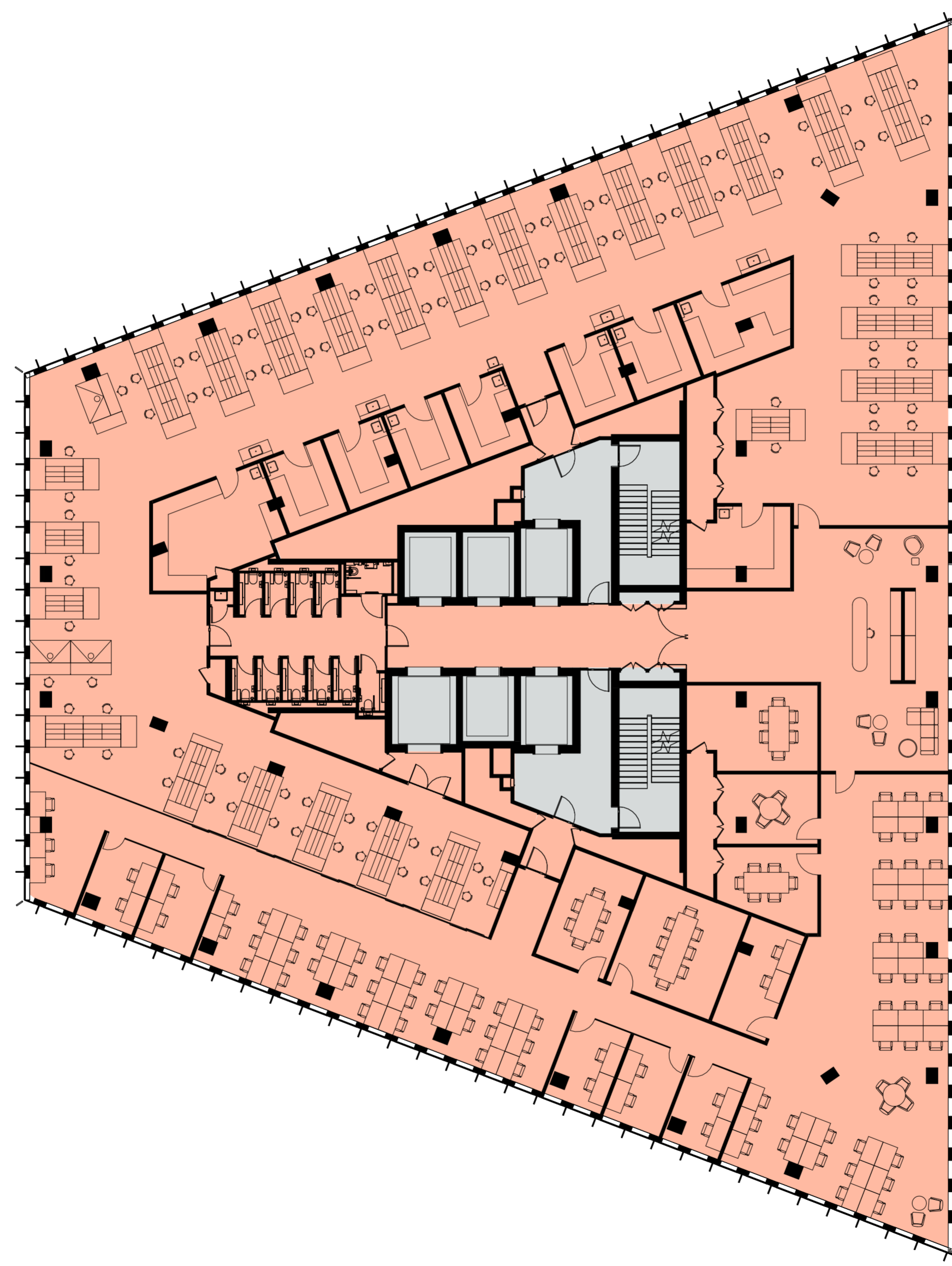
Area (GIA)

Level 8	20,462
Level 7	20,462
Level 6	18,693
Level 5	18,693
Level 4	18,937
Level 3	18,937
Level 2	18,067
Level 1	15,511
Ground Floor	17,836
Basement	26,236
Total	195,834

Reflector

Fifth & Sixth Floor Layout

+5 & +6



Area (GIA)

Level 8	20,462
Level 7	20,462
Level 6	18,693
Level 5	18,693
Level 4	18,937
Level 3	18,937
Level 2	18,067
Level 1	15,511
Ground Floor	17,836
Basement	26,236
Total	195,834

Tenant Space
Core