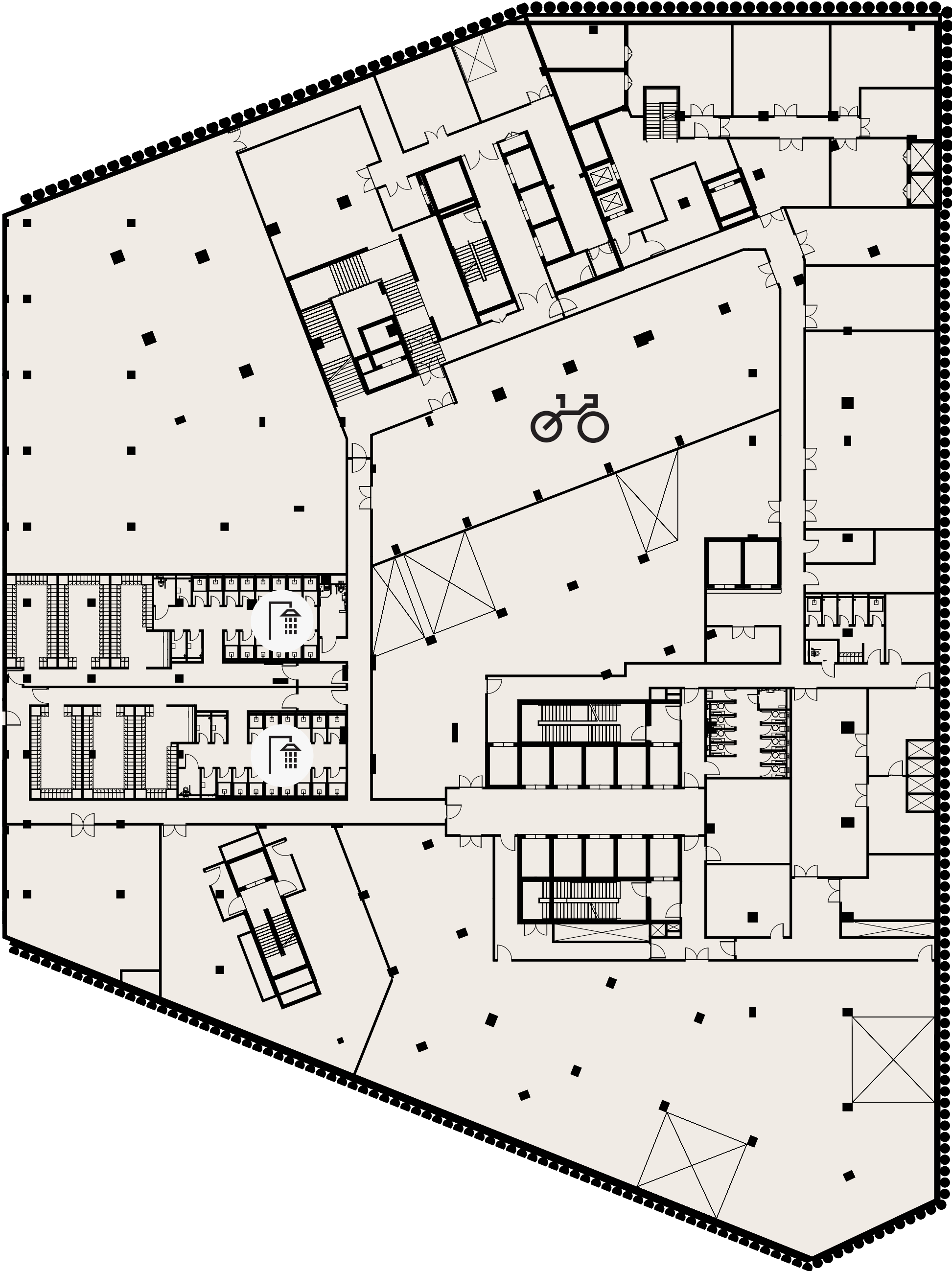


TRIBECA—LONDON

Connector

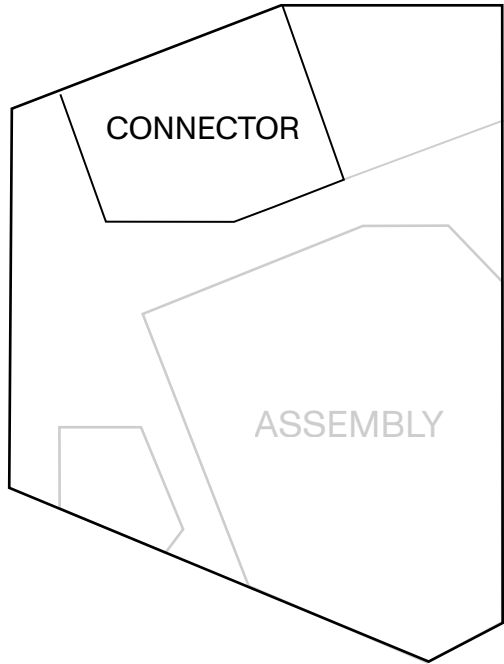
Basement Floor Layout

-1



Area (GIA)	Balcony / Terrace	
Level 6	7,293	-
Level 5	7,293	2145
Level 4	10,699	-
Level 3	10,452	-
Level 2	10,699	-
Level 1	10,452	177
Ground Floor	10,195	
Total	67,083	

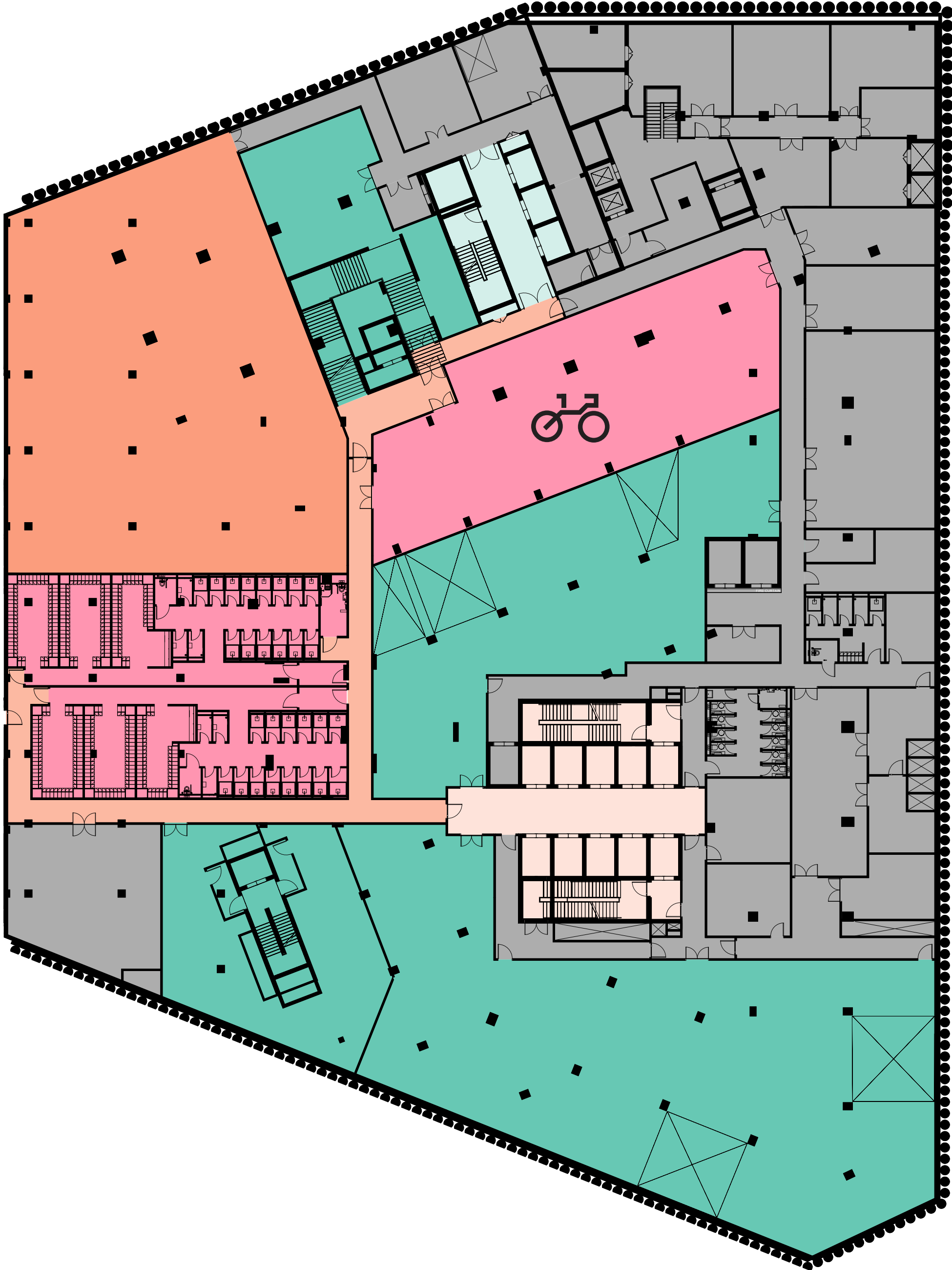
*Shared Basement 87,154



Connector

Basement Floor Layout

-1



Area (GIA)	Balcony / Terrace	
Level 6	7,293	-
Level 5	7,293	2145
Level 4	10,699	-
Level 3	10,452	-
Level 2	10,699	-
Level 1	10,452	177
Ground Floor	10,195	
Total	67,083	

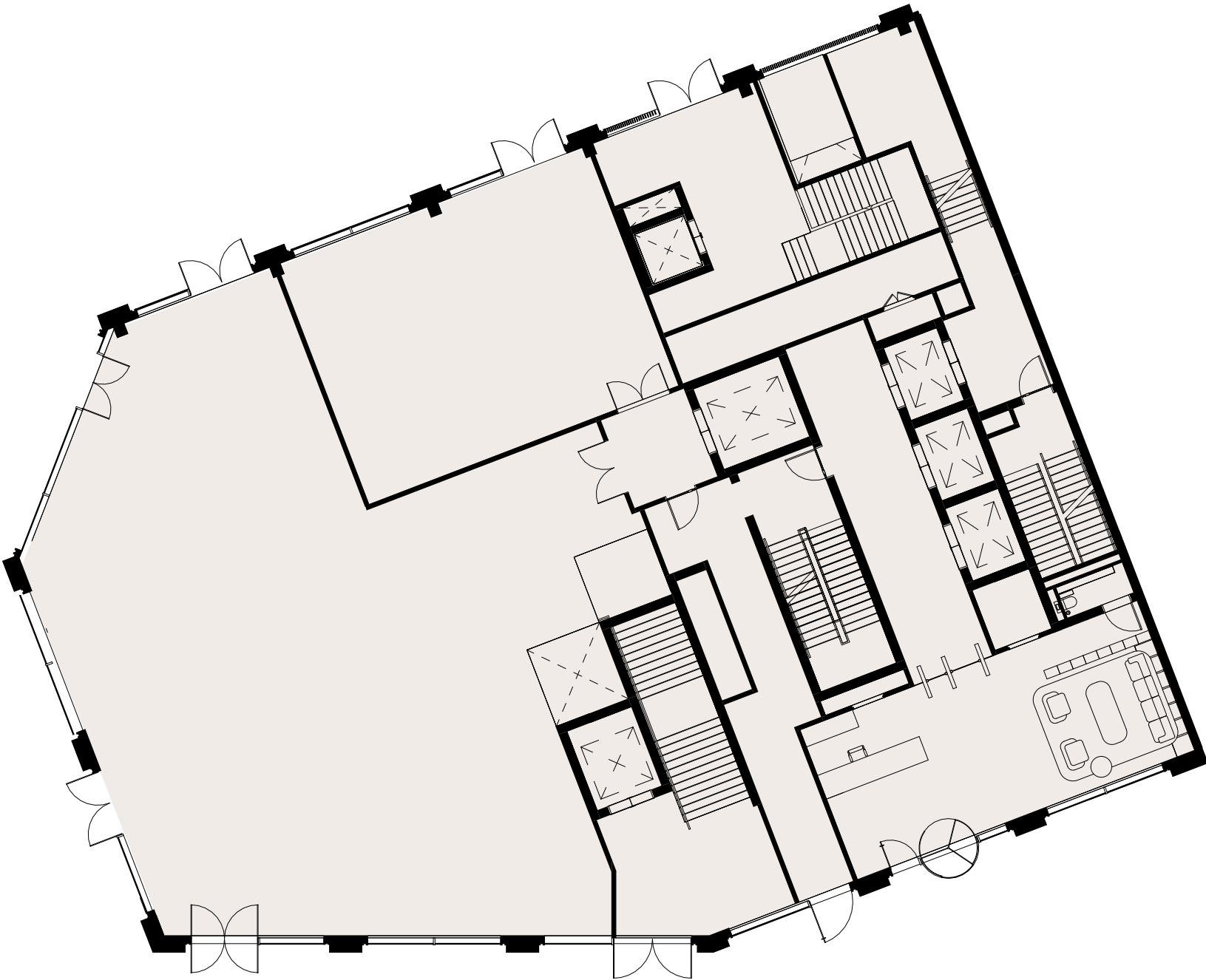
*Shared Basement 87,154

- Flexible Lab / Retail
- Connector Lift Lobby
- Gym
- Assembly Lift Lobby
- Cycle Store / Changing
- BOH

Connector

Ground Floor Layout

+0



Area (GIA)	Balcony / Terrace	
Level 6	7,293	-
Level 5	7,293	2145
Level 4	10,699	-
Level 3	10,452	-
Level 2	10,699	-
Level 1	10,452	177
Ground Floor	10,195	
Total	67,083	

Connector

Ground Floor Layout

+0



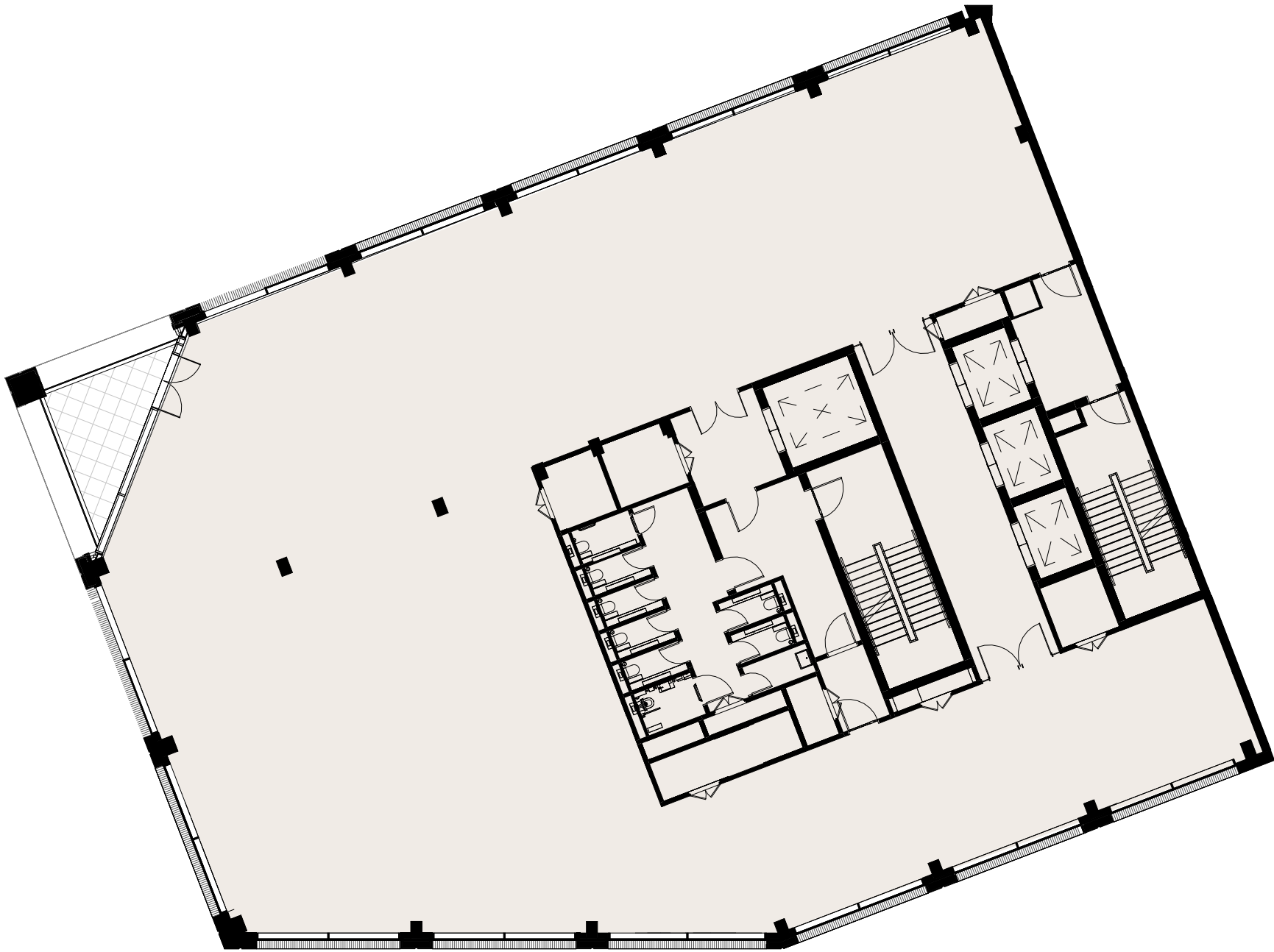
Area (GIA)	Balcony / Terrace	
Level 6	7,293	-
Level 5	7,293	2145
Level 4	10,699	-
Level 3	10,452	-
Level 2	10,699	-
Level 1	10,452	177
Ground Floor	10,195	
Total	67,083	

- Flexible Lab / Retail
- Reception
- Gym Entrance
- Cycle Store Entrance
- Core

Connector

First Floor Layout

+1

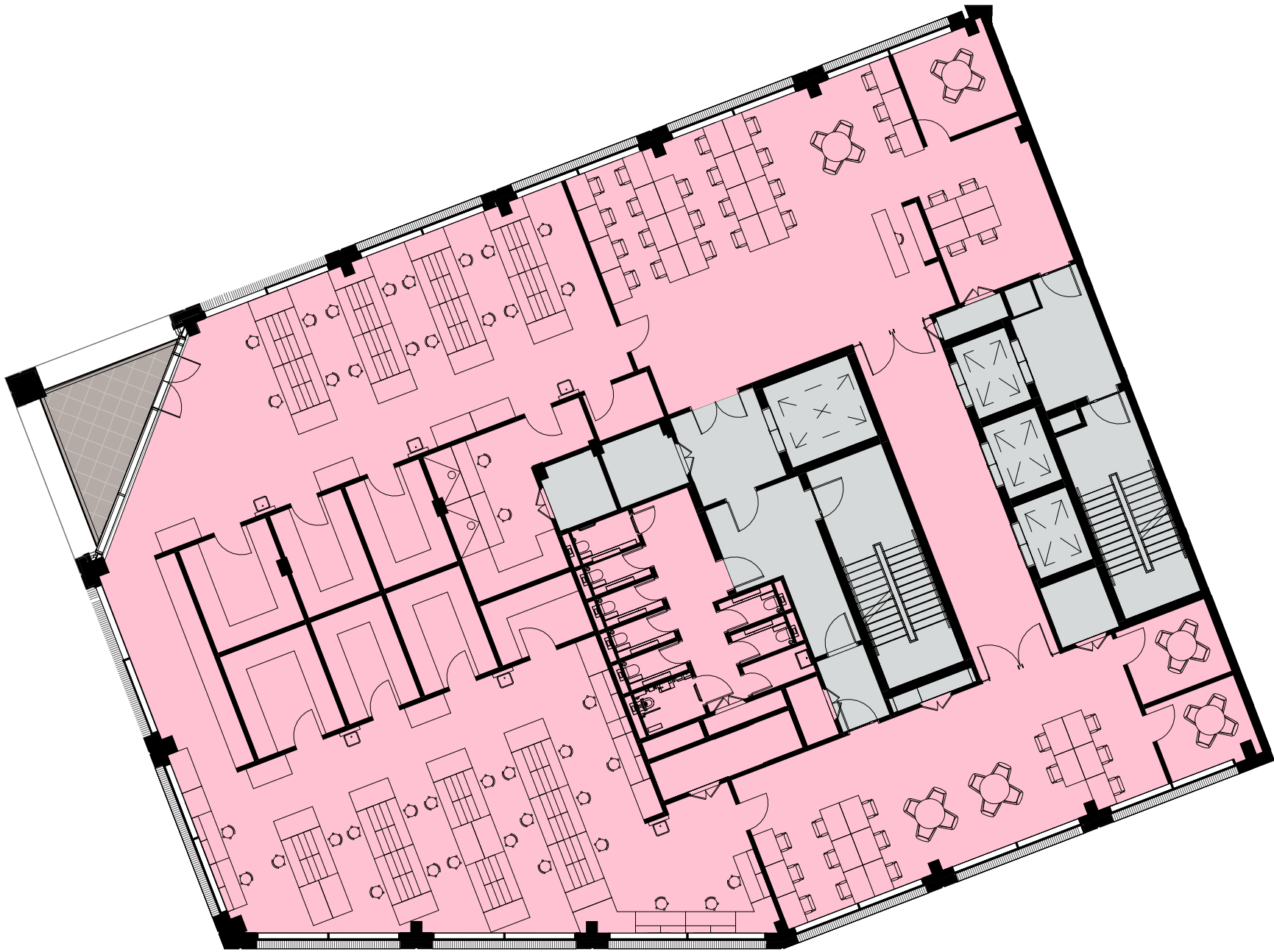


Area (GIA)	Balcony / Terrace	
Level 6	7,293	-
Level 5	7,293	2145
Level 4	10,699	-
Level 3	10,452	-
Level 2	10,699	-
Level 1	10,452	177
Ground Floor	10,195	
Total	67,083	

Connector

First Floor Layout

+1



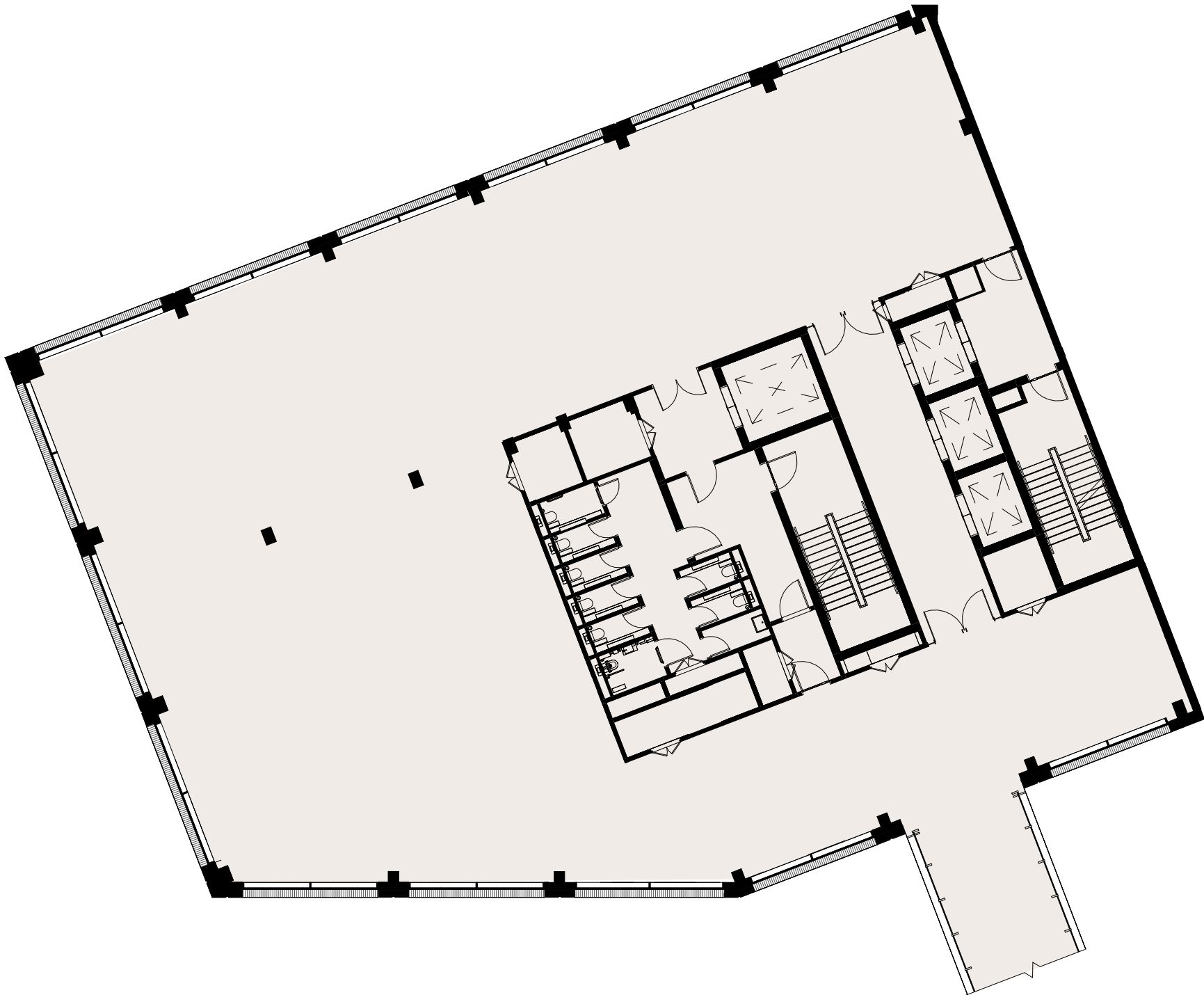
Area (GIA)	Balcony / Terrace	
Level 6	7,293	-
Level 5	7,293	2145
Level 4	10,699	-
Level 3	10,452	-
Level 2	10,699	-
Level 1	10,452	177
Ground Floor	10,195	
Total	67,083	

- Tenant Space
- Balcony / Terrace
- Core

Connector

Second Floor Layout

+2

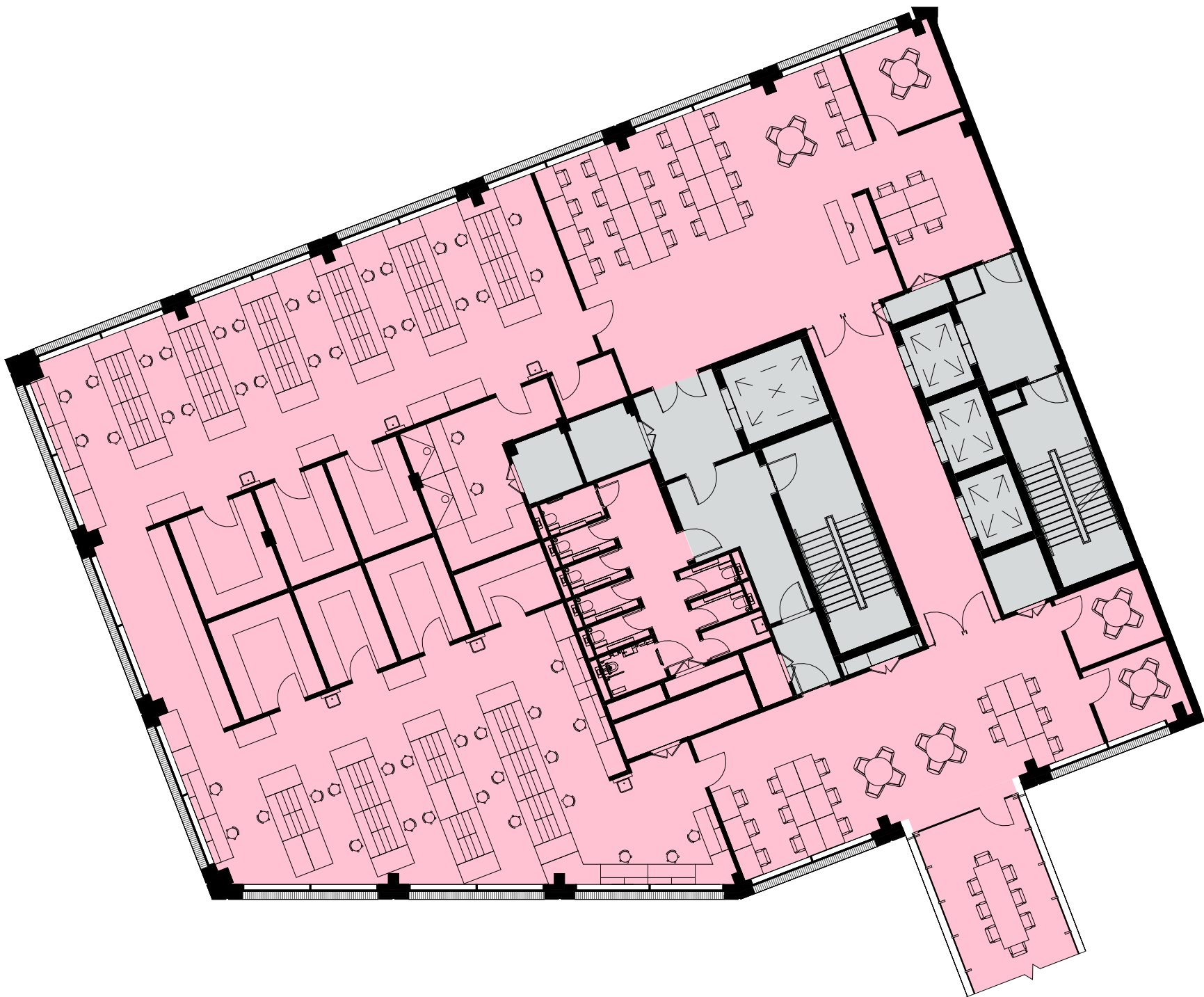


Area (GIA)	Balcony / Terrace	
Level 6	7,293	-
Level 5	7,293	2145
Level 4	10,699	-
Level 3	10,452	-
Level 2	10,699	-
Level 1	10,452	177
Ground Floor	10,195	
Total	67,083	

Connector

Second Floor Layout

+2



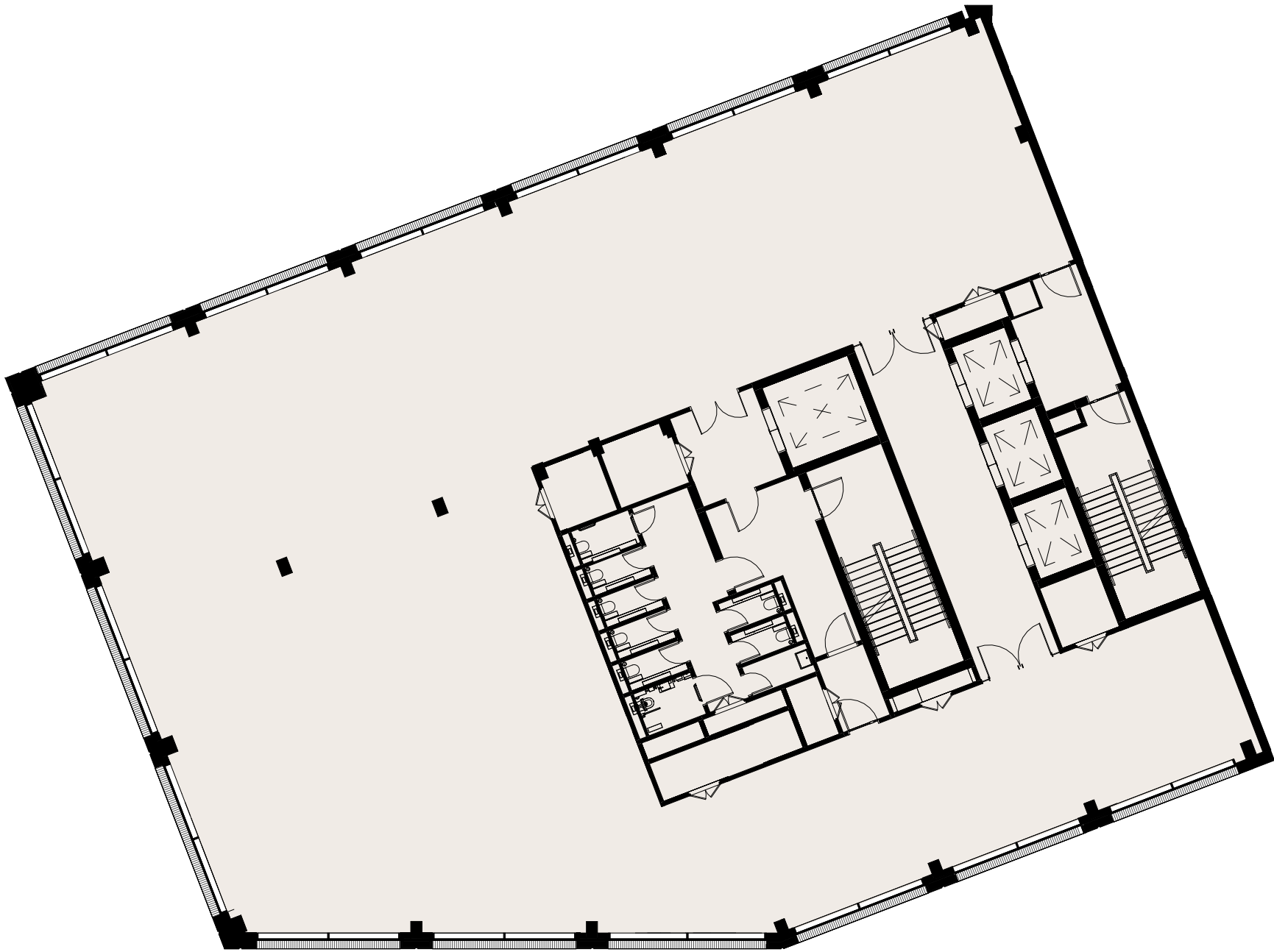
	Area (GIA)	Balcony / Terrace
Level 6	7,293	-
Level 5	7,293	2145
Level 4	10,699	-
Level 3	10,452	-
Level 2	10,699	-
Level 1	10,452	177
Ground Floor	10,195	
Total	67,083	

- Tenant Space
- Balcony / Terrace
- Core

Connector

Third Floor Layout

+3

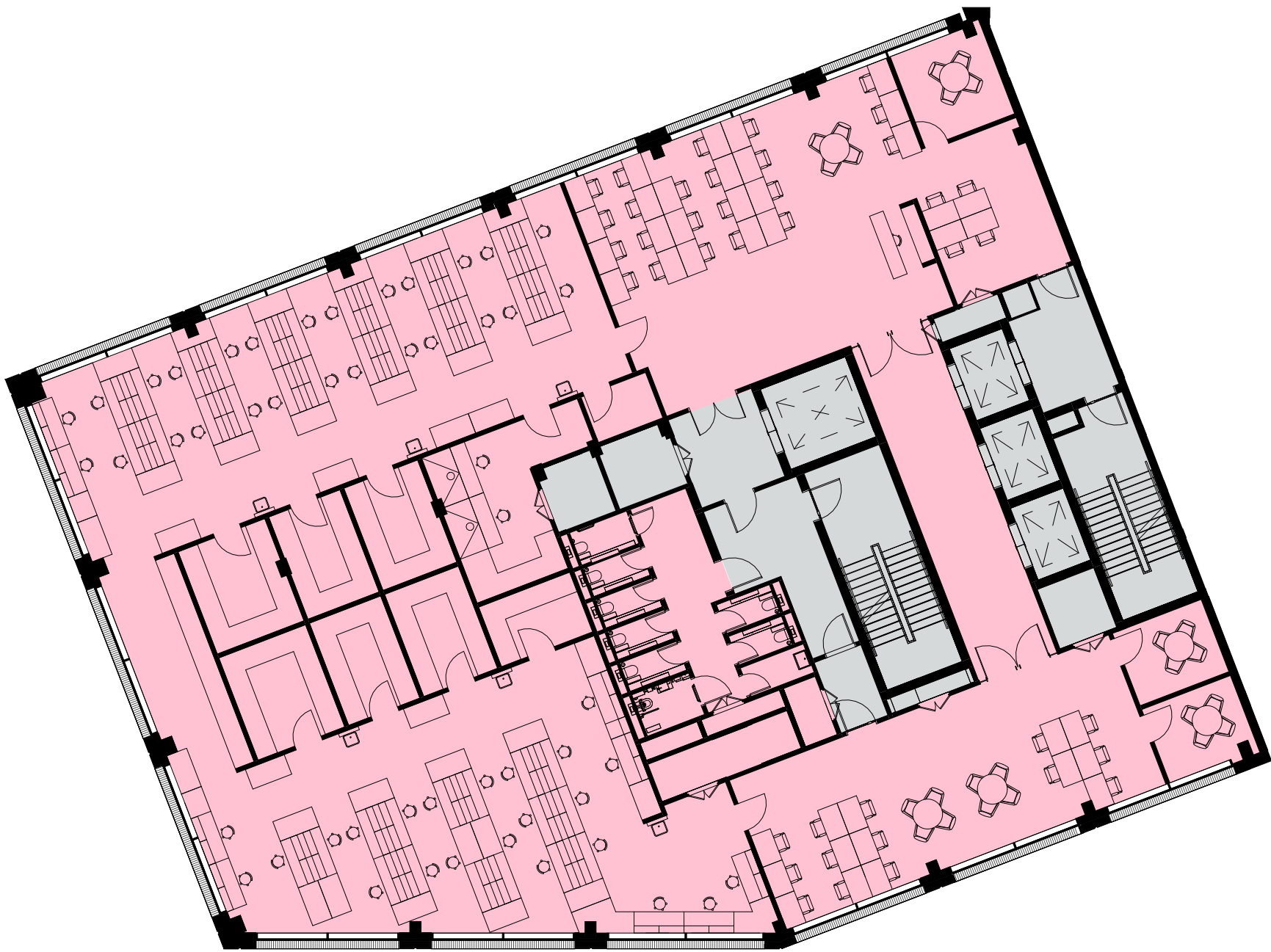


Area (GIA)	Balcony / Terrace	
Level 6	7,293	-
Level 5	7,293	2145
Level 4	10,699	-
Level 3	10,452	-
Level 2	10,699	-
Level 1	10,452	177
Ground Floor	10,195	
Total	67,083	

Connector

Third Floor Layout

+3



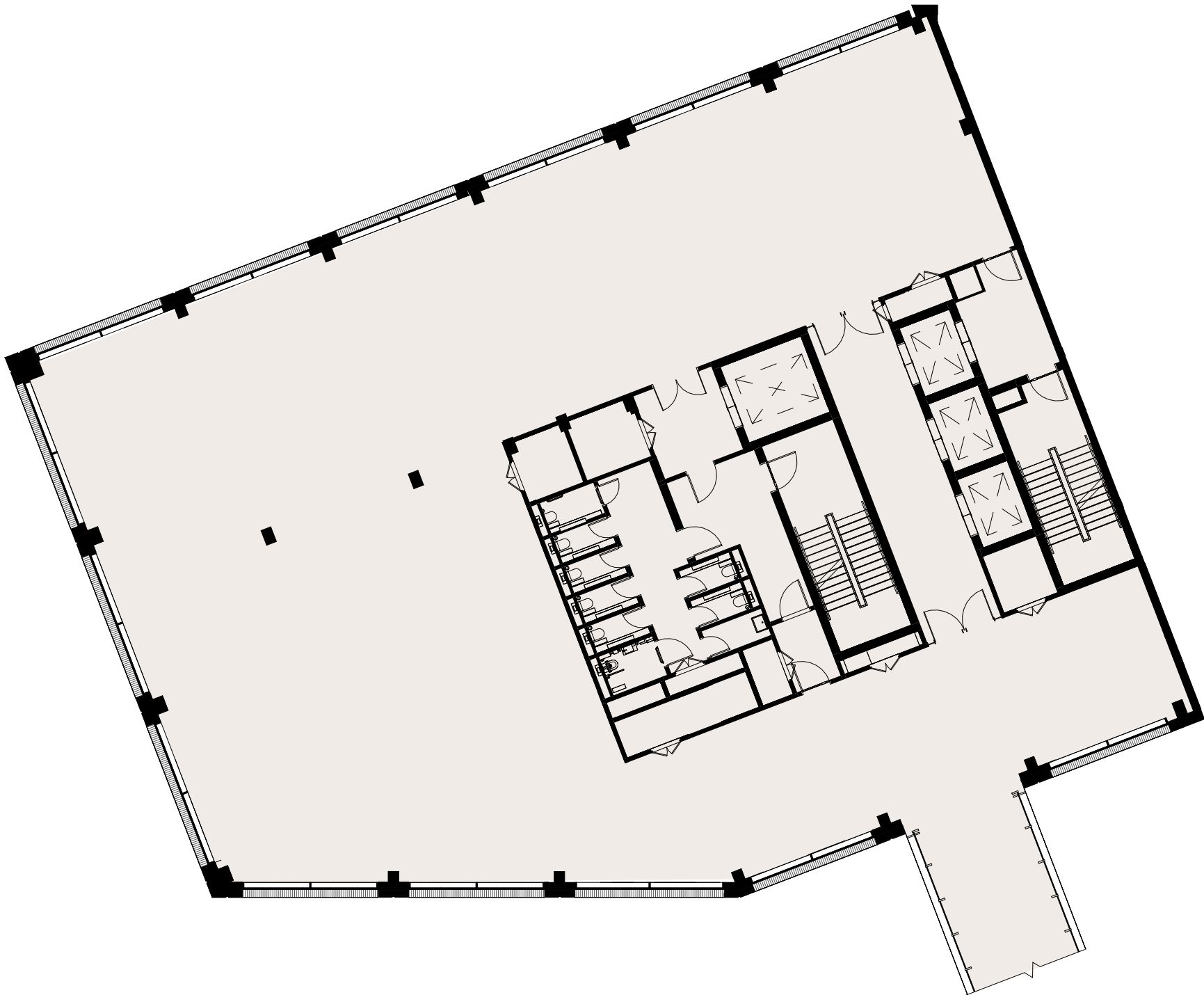
Area (GIA)	Balcony / Terrace	
Level 6	7,293	-
Level 5	7,293	2145
Level 4	10,699	-
Level 3	10,452	-
Level 2	10,699	-
Level 1	10,452	177
Ground Floor	10,195	
Total	67,083	

Tenant Space
Core

Connector

Fourth Floor Layout

+4

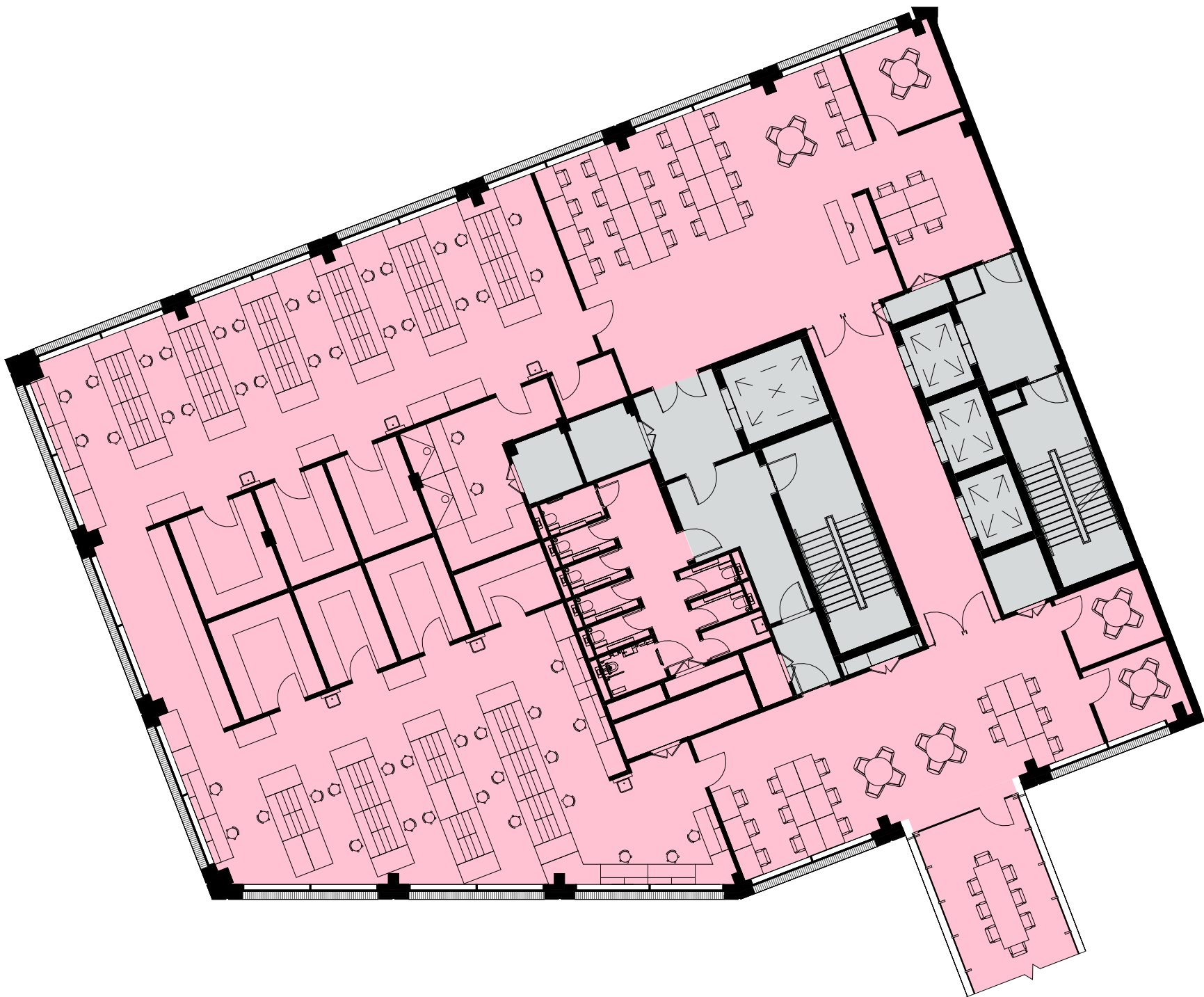


Area (GIA)	Balcony / Terrace	
Level 6	7,293	-
Level 5	7,293	2145
Level 4	10,699	-
Level 3	10,452	-
Level 2	10,699	-
Level 1	10,452	177
Ground Floor	10,195	
Total	67,083	

Connector

Fourth Floor Layout

+4



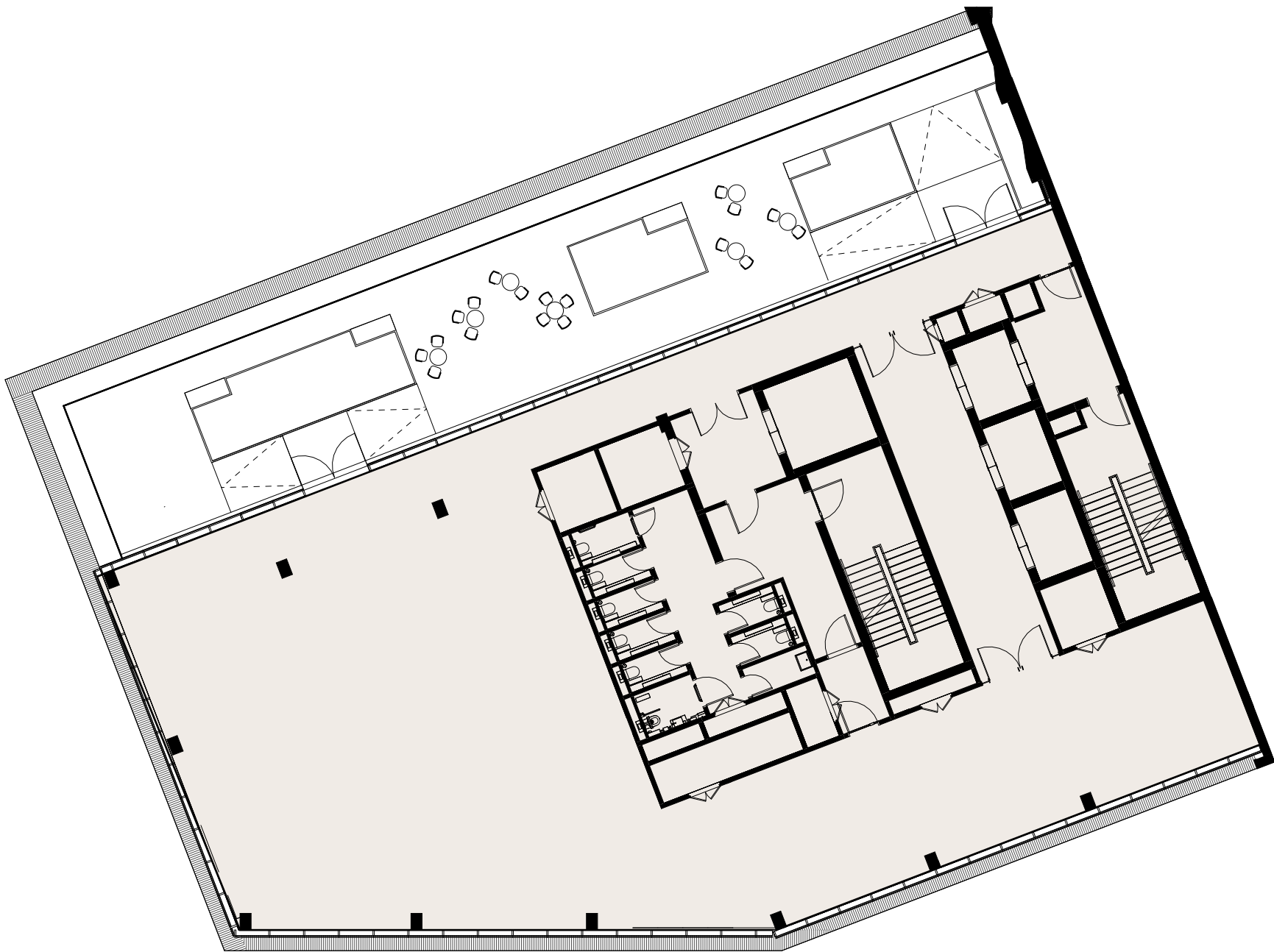
Area (GIA)	Balcony / Terrace	
Level 6	7,293	-
Level 5	7,293	2145
Level 4	10,699	-
Level 3	10,452	-
Level 2	10,699	-
Level 1	10,452	177
Ground Floor	10,195	
Total	67,083	

Tenant Space
Core

Connector

Fifth Floor Layout

+5



Area (GIA)	Balcony / Terrace	
Level 6	7,293	-
Level 5	7,293	2145
Level 4	10,699	-
Level 3	10,452	-
Level 2	10,699	-
Level 1	10,452	177
Ground Floor	10,195	
Total	67,083	

Connector

Fifth Floor Layout

+5



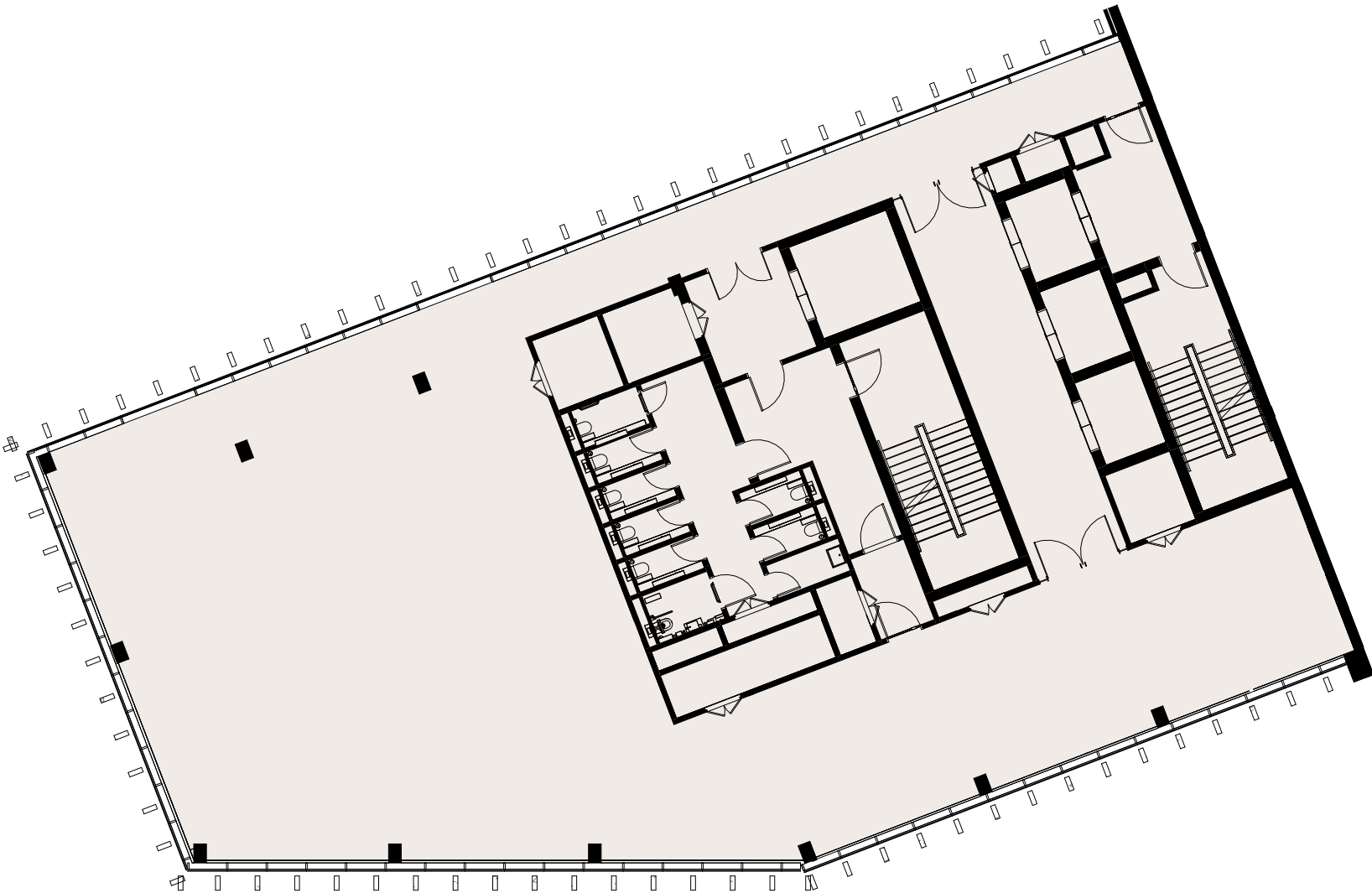
Area (GIA)	Balcony / Terrace	
Level 6	7,293	-
Level 5	7,293	2145
Level 4	10,699	-
Level 3	10,452	-
Level 2	10,699	-
Level 1	10,452	177
Ground Floor	10,195	
Total	67,083	

- Tenant Space
- Balcony / Terrace
- Core

Connector

Sixth Floor Layout

+6



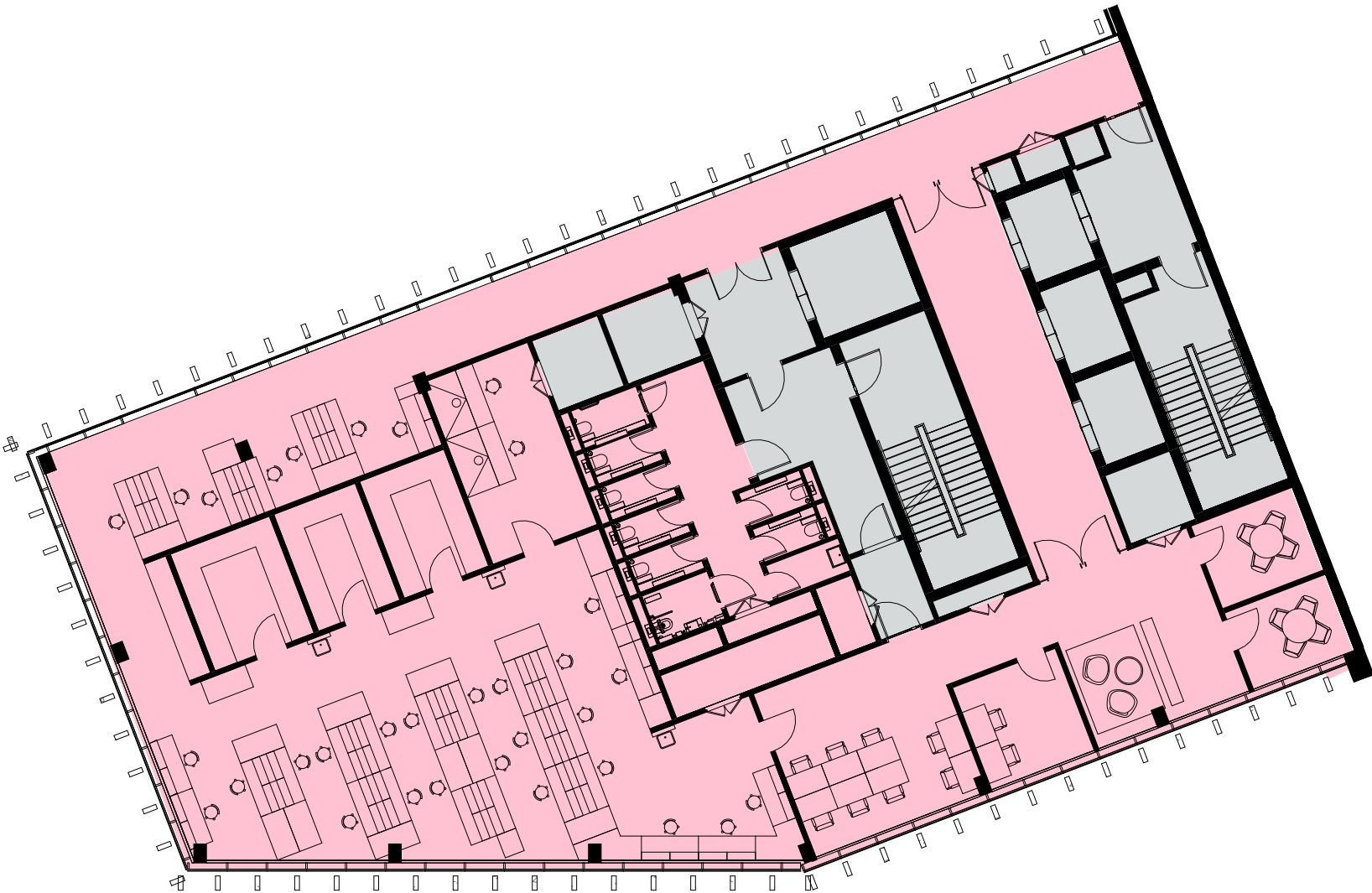
Area (GIA)	Balcony / Terrace	
Level 6	7,293	-
Level 5	7,293	2145
Level 4	10,699	-
Level 3	10,452	-
Level 2	10,699	-
Level 1	10,452	177
Ground Floor	10,195	
Total	67,083	

Connector

Sixth Floor Layout

+6

Area (GIA)	Balcony / Terrace	
Level 6	7,293	-
Level 5	7,293	2145
Level 4	10,699	-
Level 3	10,452	-
Level 2	10,699	-
Level 1	10,452	177
Ground Floor	10,195	
Total	67,083	



Tenant Space

Core