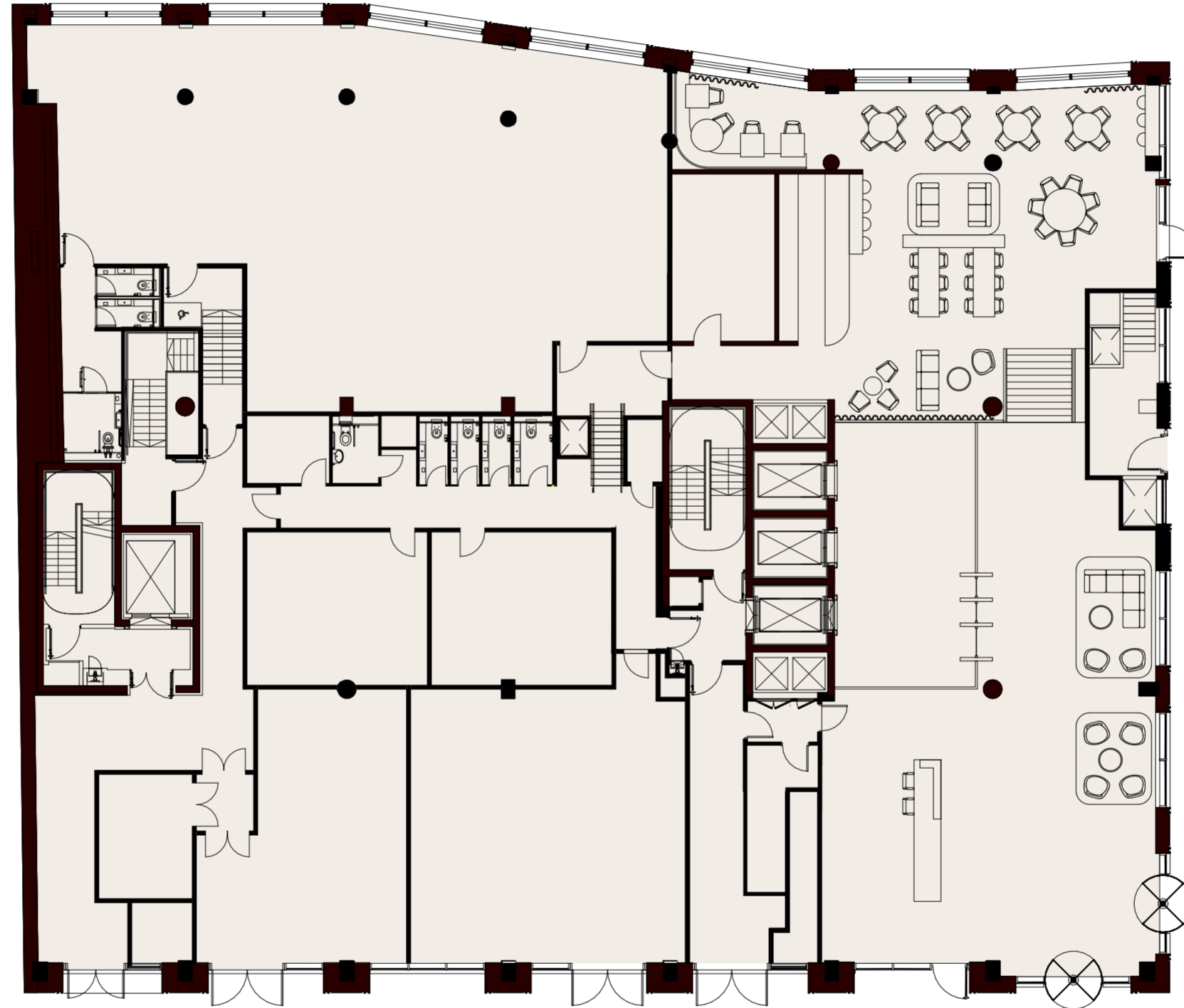


Apex

Ground Floor Layout

+0

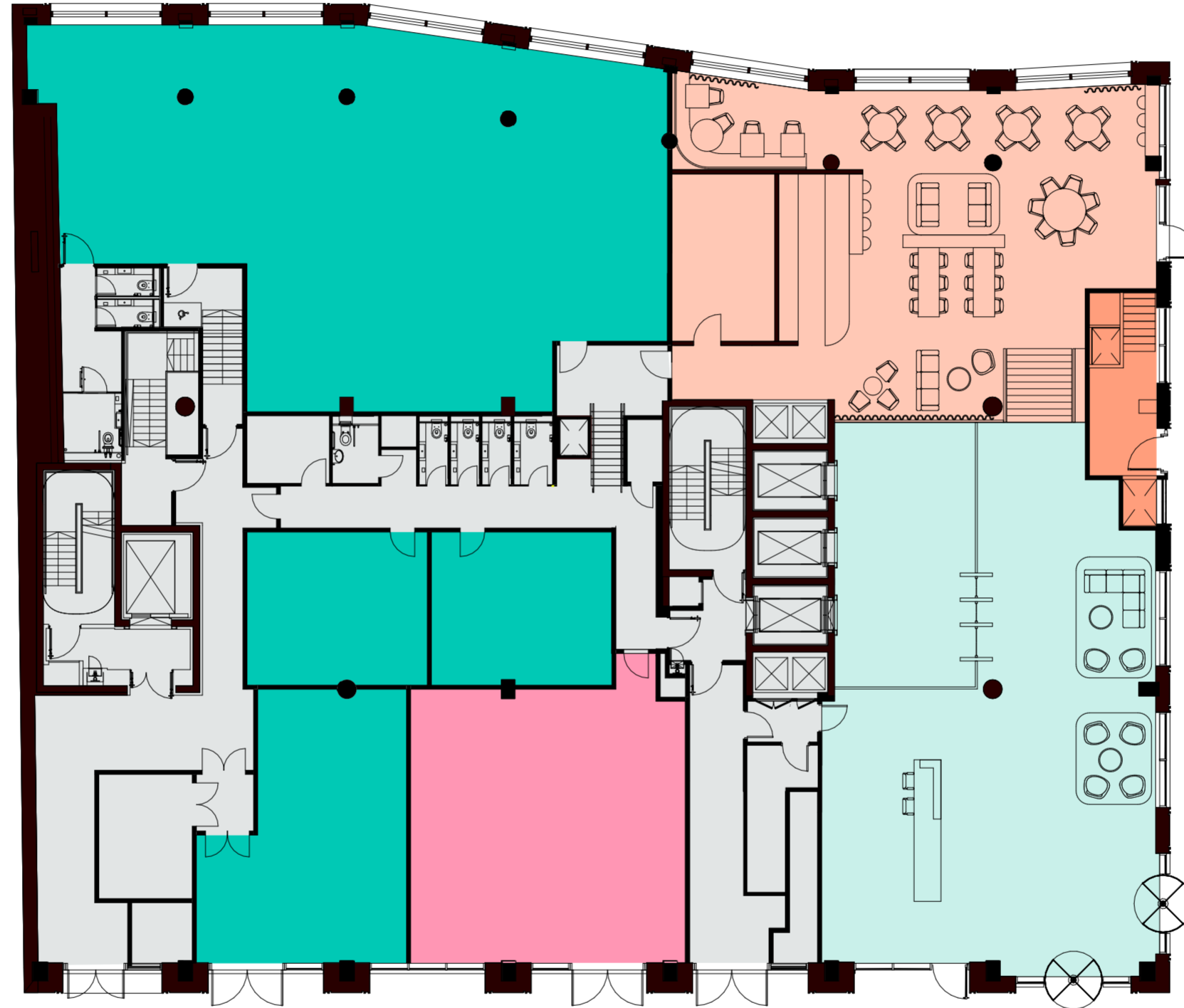


	Area (GIA)	Balcony / Terrace
Level 6	11,654	-
Level 5	11,654	1,855
Level 4	15,087	130
Level 3	15,087	130
Level 2	15,065	145
Level 1	15,084	145
Ground Floor	15,071	
Basement	13,639	
Total	112,341	

Apex

Ground Floor Layout

+0



	Area (GIA)	Balcony / Terrace
Level 6	11,654	-
Level 5	11,654	1,855
Level 4	15,087	130
Level 3	15,087	130
Level 2	15,065	145
Level 1	15,084	145
Ground Floor	15,071	
Basement	13,639	
Total	112,341	

- Cafe
- Charity Space
- Reception
- Tenant Space
- Flexible Lab / Retail
- Core